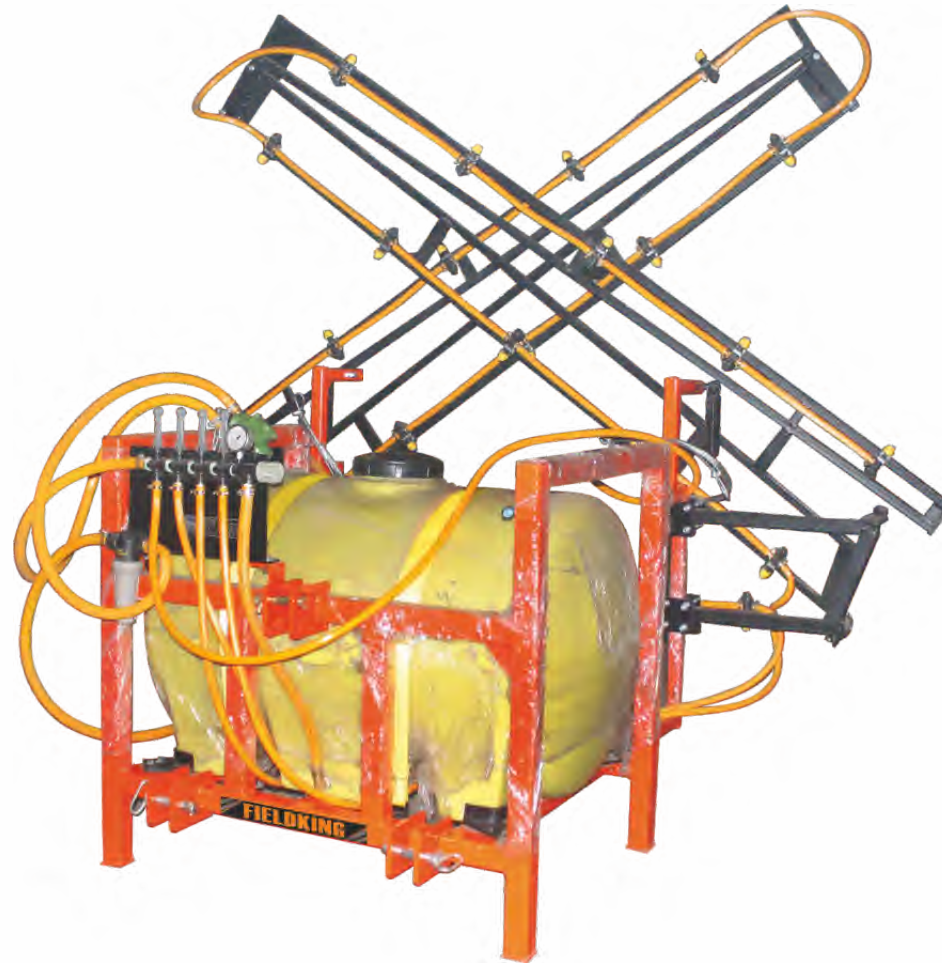


FIELDKING

Tractor Mounted Boom Sprayer (Roller PTO Pump)



➤ [Operator Manual](#) ➤ [Service Manual](#) ➤ [Part Catalogue](#)

CONGRATULATIONS!

You have invested in one of the best implements of its type in the market today.

The care you give your “FIELDKING” implement will greatly determine your satisfaction with its performance and its service life. A careful study of this manual will give you a thorough understanding of your new implement before operating.

If your manual is lost or destroyed, “FIELDKING” will be glad to provide you a new copy. Visit to nearest dealership & get a copy. Most of our manuals can also be downloaded from our website at www.fieldking.com.

As an authorized “FIELDKING” dealer, we stock genuine “FIELDKING” parts which are manufactured with the same precision and skill as our original equipment. Our trained service persons are well informed on methods required to service “FIELDKING” equipments and are ready to help you.

Should you require additional information or assistance, please contact us.

YOUR AUTHORIZED

FIELDKING DEALER

BECAUSE “FIELDKING” MAINTAINS AN ONGOING PROGRAMME OF PRODUCT IMPROVEMENT, WE RESERVE THE RIGHT TO MAKE IMPROVEMENTS IN DESIGN OR CHANGE IN SPECIFICATION WITHOUT INCURRING ANY OBLIGATION TO INSTALL THEM ON UNITS PREVIOUSLY SOLD. BECAUSE OF THE POSSIBILITY THAT SOME PHOTOGRAPHS IN THIS MANUAL WERE TAKEN OF PROTOTYPE MODELS, PRODUCTION MODELS MAY VARY IN SOME DETAIL. IN ADDITION, SOME PHOTOGRAPHS MAY SHOW SHIELDS REMOVED FOR THE PURPOSE OF CLARITY. NEVER OPERATE THIS IMPLEMENT WITHOUT ALL SHIELDS IN PLACE.

TO THE PURCHASER

This manual contains valuable information about your new “FIELDKING” tractor mounted boom sprayer. It has been carefully prepared to give you helpful suggestions for operating, adjusting, servicing and ordering spare parts.

Keep this manual in a convenient place for quick and easy reference. Study it carefully. You have purchased a dependable and sturdy tractor mounted boom sprayer but only by proper care and operation you can expect to receive the service and long life designed and built into it.

Sometime in the future your tractor mounted boom sprayer may need new parts to replace which are worn out or broken. If so, go to your dealer and provide him equipment’s detail like model and part number.

CUSTOMER INFORMATION

Name _____

Purchased From _____

Date of Purchase _____

Model No. _____

Serial No. _____

PURCHASER / OPERATOR'S RESPONSIBILITY

1. Read and understand the information contained in this manual.
2. Operate, lubricate, assemble and maintain the equipment in accordance with all instructions and safety procedures in this manual.
3. Inspect the equipment and replace or repair any parts that are damaged or worn out which under continued operation would cause damage, wear to other parts, or cause a safety hazard.
4. Return the equipment or parts to the authorized "FIELDKING" dealer, from where it was purchased, for service or replacement of defective parts that are covered by warranty. (The "FIELDKING" Factory may inspect equipment or parts before warranty claims are honored.)
5. All costs incurred by the dealer for traveling to or transporting the equipment for warranty inspection and claims will be borne by the customer.

INDEX

1. TECHNICAL DATA

- 1.1 Introduction
- 1.2 Warranty Period
- 1.3 Nature & Ambient Of Warranty
- 1.4 Warranty Limitations

2. TECHNICAL SPECIFICATIONS

3. WORKING INSTRUCTIONS

- 3.1 Sprayer Boom
- 3.2 Sprayer Control Panel
- 3.3 Calibration

4. TROUBLESHOOTING GUIDE

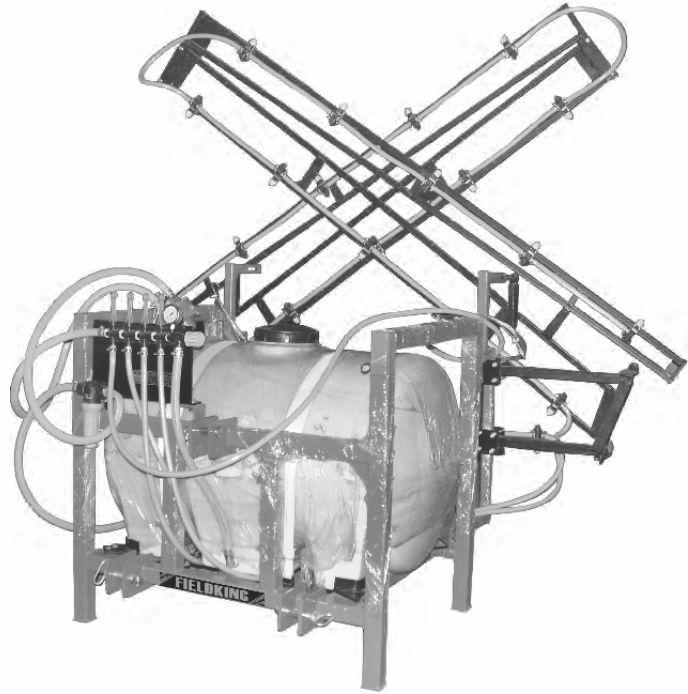
5. SAFETY

6. WARRANTY

- 6.1 Delivery & Warranty Registration.

1. Introduction

Tractor Mounted Boom Sprayer



Roller PTO pump



Non drip tee bodies



Spring loaded boom sections



Polyethylene tank

FEATURES

- “FIELDKING” Tractor Mounted Boom Sprayer connected to the three point linkage of tractor and getting drive from (P.T.O) are used for multipurpose plant protection. With these sprayers all kind of field crops could be sprayed.
- Full UV & chemical resistant virgin polyethylene tank. Solid color means no algae growth inside the tank.
- Spring loaded boom sections which help deflection of trees.
- Easy to use control panel, calibration chart, pressure gauge & pressure regulator.
- It has dual 100 micron filtration as standard.
- Non drip tee bodies.

1.2 WARRANTY

When the machine is delivered, check that it has not been subjected to damage during transport and that the accessories are in a perfect condition and complete.

Any claims following the receipt of damaged goods shall be presented in writing within 8 days from the receipt of the goods.

The purchaser may only make the claims under guarantee when he has complied with the warranty conditions in the supply contract.

1.3 NATURE AND AMBIENCE OF THE WARRANTY

ONE YEAR MANUFACTURER WARRANTY

Besides the cases specified in the supply agreement, the guarantee shall in any case become void:

- 1) When the implement has been used beyond the specified power limit like (Tractor Horse Power).
- 2) When repairs made by the customer without authorization from the manufacture or owing to installation of spurious spare parts, the machine is subjects to variations and the damage can be ascribed to these variations.
- 3) When the user has failed to comply with the instructions in the handbook.
- 4) If the implement is used in tough turf or in big pot holes, damage occurred due to this conditions or wrong transportation means will void warranty over the BOOM RODS.
- 5) No guarantee will be given if service and greasing/lubricating of pump is not done on after use.
- 6) The warranty shall not apply to the following:
 - Nose Cap
 - Tank
 - Cardon Shaft and Universal Cross Joints
 - Paint
 - Bearing
 - Rubber Parts/Gaskets
 - Fasteners
 - Hose Pipe
- 7) The above warranty is in lieu of all other warranties express or implied and no person, agent or representative of the company is authorized to give any other warranty on company's behalf or to assume for it any other liability in connection with the product.
- 8) The contract will be ineffective if:
 - The dully filled warranty card is not present during the repairs.
 - The FIELDKING TRACTOR MOUNTED BOOM SPRAYER or any other parts thereof is subjected to neglect, fire, floods, or other acts of GOD or if in the company's opening any damage has been caused to the FIELDKING Tractor Mounted Boom Sprayer.
 - The original numbers are removed, obliterated or altered from the unit.

- Any attempt is made to have the repairs executed by a person, other than the company's or its authorized representatives.
- Any Defect is not informed immediately to the company or its authorised representatives.
- The use of replacement parts not manufactured or supplied by the company will automatically invalidate this warranty.
- This Warranty shall not apply to defects/damages caused by normal wear and tear, accident, transportation, misuse or neglect, usage in non agricultural applications, defect in the products which have been altered or removed. Company's decision in this respect will be final and binding on all.

1.4 WARRANTY LIMITATION

- (a) This warranty does not cover:
- (i) The cost of labour or replacement of defective parts at the installation site.
 - (ii) Products which have been subject to misuse, neglect, alteration, accident or improper construction or installation or maintenance.
 - (iii) Replacement necessitated by normal wear and tear.
- (b) To the extent that the law permits or allows it to exclude or limits its liability the Company under the warranty accepts no responsibility for loss of the use of the product, loss of time, inconvenience, loss of production, demurrage or any other damage consequential or otherwise.
- (c) The Company reserves the right to make changes or improvements in its products at any time without assuming any obligation to modify any product previously manufactured.
- (d) Products manufactured or supplied by other companies, are subjected to their warranty conditions.

2. TECHNICAL SPECIFICATIONS

3-POINT LINKAGE SPRAYERS

- Standard Features
- Horizontal roto moulded tank for total drainage
- Super strong construction
- Spring loaded folding boom.
- 4 metres of hose with lance
- Pressure regulator
- Pressure gauge
- 100 micron filter



3. Working instructions

N.B.- Before start up please ensure you have read and fully understand the first section of this manual—particularly the emphasis on safety and safe operation of your new sprayer. If you have any doubt or questions you should contact our dealer immediately and not proceed with operating the sprayer.



Photo of sprayer now secured to the tractor.

- (i) The operator must select a suitable vehicle attaching the sprayer. The sprayer must be well secured to the tractor.

NOTE: The sprayer must be level and parallel to the ground for optimum operation. Adjustment to the tractors third linkage arm may be required.

- (ii) The FIELDKING Tractor Mounted Boom Sprayers uses roller pump for fluid distribution. The pump requires power supply from the tractors power take off (PTO) and runs at 540 RPM.



Photo of the sprayers pump connected to the tractors PTO.

- (iii) Make sure all nuts and bolts are secure. Make sure all hoses are secure.

We are now ready to prepare the spraying system for operation. This will include calibration of the pump and boom. This preparation is essential for your intended spray activity and will ensure totally accurate application of the chemicals or fertilizers you are about to spray.

The FIELDKING Tractor Mounted Boom Sprayer tanks are rotationally moulded from food grade virgin polyethylene. They are U.V. stabilized and fully chemical resistant. FIELDKING tanks are tough and ready for hard work. Solid colour means no algae growth inside the tank.

The tanks are very easy to clean out after use meaning no left over chemical residue which may be harmful to other crops that require spraying. All FIELDKING tanks are moulded from Virgin polyethylene.



Photo of FIELDKING Tractor Mounted Boom Sprayer Tank

Fill the tank with a small amount of water – say around 50 liters.

3.1 Sprayer boom

The FIELDKING Tractor Mounted Boom Sprayer comes with a 10/12 meter folding boom with 20 & 24 precision matched nozzles. Distance between two nozzles should be 500 mm. Height of each boom can adjusted to suit crop requirements. The boom should be adjusted to 500mm above the spray target.

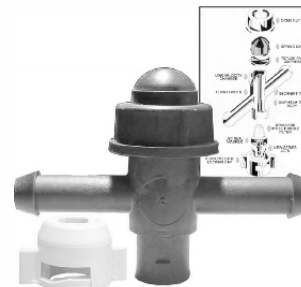


Photo showing the boom fully unfolded in spraying position.



Boom height should be 500mm above the spray target.

- (i) All nozzles and filters should be checked and cleaned prior to use. Clean the thimble filters which are on top of the nozzles. Wash the filters in clean water and replace. It is recommended that the filters and nozzles be soaked in **clean water** after prolonged use.



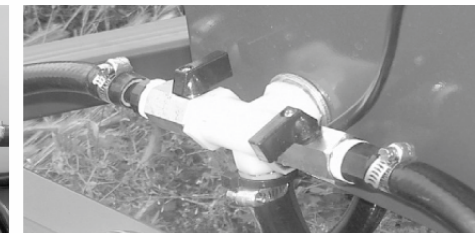
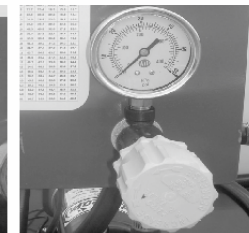
Make sure the spray line filter is also clean.



- (ii) To clean turn off boom control valve and remove filter cartridge. Flush the filter cartridge in clean water and replace. It is recommended that the filter be soaked in FIELDKING Boom Wash after prolonged use. Which can be purchased at you nearest FIELDKING Dealer.

3.2 Sprayer control panel

The control panel consists of a pressure relief valve and calibration chart on the front of the panel. There are also two taps at the rear of the control panel. The tap on the right controls the fluid control to the boom. The tap on the left controls fluid to the spray lance, which can be used for spot spraying purposes. NB the spray lance cannot be calibrated and is inaccurate and is only to be used for spot spraying. For accuracy of application the boom must be used.”



Calibration chart. Pressure regulator valve.

Boom control & spray lance control valves.

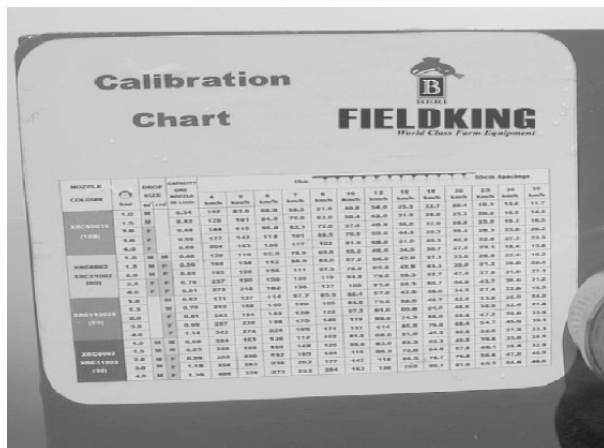
You are now ready to test and begin the calibration of the sprayer.

- (i) At the back of the control panel turn the left hand valve on. This will give open flow to the boom.
- (ii) At the front of the control panel wind the pressure relief valve handle clockwise all the way in. This will give minimum flow to the boom. The fluid instead will by pass back to the tank.
- (iii) Start the tractor and safely engage the tractor PTO and pump. Set the PTO and engine revolutions to suit working conditions.
- (iv) At the front of the control panel turn the pressure relief valve handle 1 turn counter clockwise. This will give flow of water from the tank through the pump and out to the boom.

NOTE: Make sure that all nozzles are operation correctly with a defined spay fan. Nozzles that are blocked can be cleaned by using the soft brush. Care must be taken when cleaning the nozzles so no damage is done to the nozzles orifice. If damaged the sprayers application rate will be drastically compromised.

3.3 CALIBRATION

For accurate application of the chemicals or fertilizer you are about to spray, calibration of the sprayer is required.



There are 3 selection criteria to consider when calibrating your FIELDKING low volume sprayer. Nozzle selection and the nozzles rated capacity in liters per minute, operation pressure which will determine the selected nozzles output and speed which will determine the total coverage per hectare.

Traditionally, in the past, spraying of crops in India has been carried out using high volumes of water. FIELDKING low volume spraying uses technologically advanced nozzles with premium atomisation of fluid occurring to achieve Volume Median Diameters between the premium range of 50 micron and 300 micron. Any droplets below 50 micron are susceptible to drift and could float away. Any droplets over 300 micron are heavy and are prone to run off.



For the example we are offering in this manual, we will calibrate the sprayer to deliver 204 liters per hectare at a pressure of 3 BAR (44 PSI) at a constant speed of 7 KM/H. The FIELDKING Linkage sprayer can be calibrated to almost any volume per hectare at almost any speed given correct nozzle selection.

The blue nozzle we are going to use is a LU multi range flat fan nozzle and has a Volume Median Diameter (VMD) of 215 and has a fan angle of 120 degrees which gives triple overlap at 500mm from the target.”

We must firstly select the correct pressure. This will be done by adjusting the pressure regulator valve.

With the tractors PTO operating at working RPM wind the handle adjust the handle until the gauge reads 3 BAR or 44 PSI. When done lock the screw handle with the ring lock.

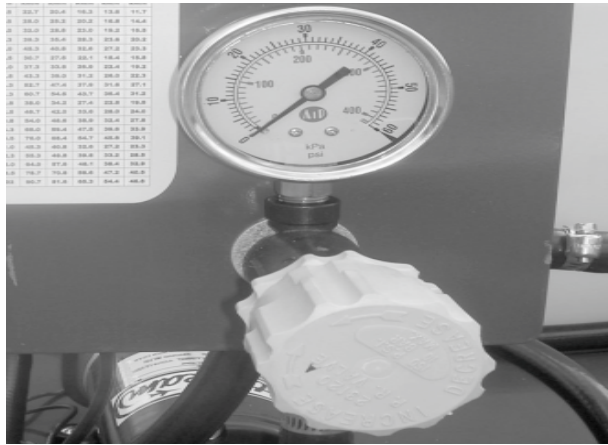


Photo of the pressure regulator.

The FIELDKING Tractor Mounted Boom Sprayers use the pressure regulator to achieve constant pressure. Any fluid pumped from the tank but not required at the boom is bypassed via the pressure regulator back to the tank for agitation.”

The speed at which the tractor and sprayer travels is vital to the calibration process. You must now select a suitable gear combined with engine RPM to travel at a constant speed of 7 KM/h.

We have now completed the calibration process. Based on our inputs we have calibrated the sprayer to apply its contents at 204 liters per hectare based on a constant speed of 7 KM/H and constant pressure of 3.0 BAR, using a Blue LU 03 flat fan jet.

You are now ready to spray. You can now add the prescribed amount of chemical or fertilizer you intend spraying.

Now add the desired amount of water needed to complete the spraying.

Your local FIELDKING dealer or reseller can help you with calibration and nozzle selection.

Once you have added your chemicals and water to the tank you can keep the chemicals in complete suspension by having the PTO and pump in operation. Any fluid being pumped from the tank will bypass back to the tank via the pressure relief valve. If spot spraying of weeds using the spray lance is required the left hand tap at the rear of the control panel should be open. A pressure of 3 to 4 BAR (45 to 60 PSI) is sufficient for spot spraying.

When you are ready to spray simply turn on the tap controlling flow to the boom. When you are finished spraying turn the boom control tap off. Whilst ever the PTO is engaged and the boom control tap is off all fluid being pumped from the tank is being returned to tank as by pass. Even whilst spraying approximately 80% of the solution being pumped, is returning to the tank and agitating the tank mix.

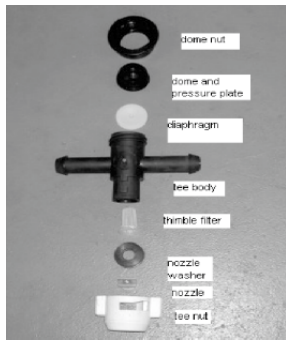
When you have completed your spraying task it is important to clean your sprayer especially the tank and spraying system. This can be easily completed with fresh water and FIELDKING boom cleaner pumped through the spray system for several minutes.

IMPORTANT: NEVER RUN PUMP DRY!

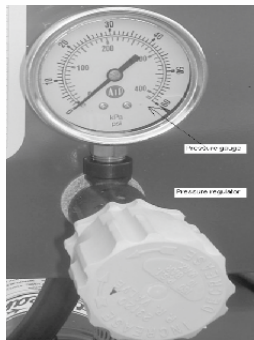
4. TROUBLESHOOTING GUIDE

Troubleshooting Guide

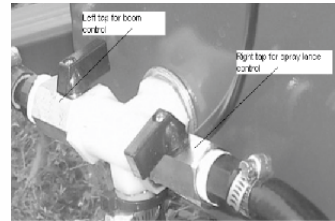
| Problem | Causes and remedies |
|---|--|
| No pressure or no capacity | Inlet line not fully immersed in tank, or low tank level. |
| | Pump not properly primed. |
| | Clogged inlet strainer. |
| | Inlet line air leaks. Use plumber's joint compound or Teflon tape. Tighten all connections. Check hoses for cracks or pin holes. |
| | Inlet line blocked or hose collapsed. |
| | Pump is air-bound. Check for dry tank, or "traps" in the line. Try removing one nozzle unit pump starts priming. |
| Pump runs, but low pressure and capacity | Worn and leaking seals. Replace. |
| | Pump turning in wrong direction. (A reverse direction pump will not work on a tractor PTO). |
| | Inlet line and fittings partially blocked or too small. Hose kinked |
| Pump pressure good, but low output through the nozzles | Worn rollers. Replace with new (see parts list). |
| | Clogged inlet strainer. |
| | Nozzle orifices too small. Install larger sizes. |
| Excessive noise or vibration | Outlet line too small or blocked. |
| | Bypass partially open. Close it. |
| | Possible loose coupler...bent or damaged shaft. |
| Impossible to rotate shaft | Excessive PTO speed.. 1200 rpm maximum. |
| | Inlet line leaks or clogged strainer |
| | Worn rollers, Replace with new. |
| Impossible to rotate shaft | Corrosion or foreign object in pump. Disassemble and thoroughly clean all parts. Replace worn parts. See section on Maintenance. |



Tee body with components



Pressure gauge and regulator



Rear control plate plumbing

SAFETY... YOU CAN LIVE WITH IT

EQUIPMENT SAFETY GUIDELINES

- Every year many accidents occur which could have been avoided by a few seconds of thought and a more careful approach to handling equipment. You, the operator, can avoid many accidents by observing the following precautions in this section. To avoid personal injury, study the following precautions and insist those working with you, or you yourself, follow them.
- In order to provide a better view, certain illustrations in this manual may show an assembly with a safety shield removed. However, equipment should never be operated in this condition. Keep all shields in place. If shield removal becomes necessary for repairs, replace shield prior to use.
- Replace any caution, warning, danger or instruction safety decals that are not readable or are missing. Location of such decals is indicated in this booklet.
- Do not attempt to operate this sprayer under the influence of alcohol or drugs.
- Review safety instructions with all users.
- Operator should be a responsible adult. **DO NOT ALLOW PERSONS TO OPERATE OR ASSEMBLE THIS UNIT UNTIL THEY HAVE DEVELOPED A THOROUGH UNDERSTANDING OF SAFETY PRECAUTIONS AND HOW IT WORKS.**
- To prevent injury or death, use a tractor equipped with a roll over protective system (ROPS).
- Do not paint over, remove, or deface any safety signs or warning decals on your sprayer.
- Observe all safety signs and practice instructions on them.
- Never exceed limits of a piece of machinery. If its ability to do a job, or to do so safely is in question – **DON'T TRY IT.**

5. SAFETY

Take Note! This Safety Alert Symbol Found Throughout This Manual Is Used To Call Your Attention To Instructions Involving Your Personal Safety And Safety Of Others. Failure To Follow These Instructions Can Result In Injury Or Death.



THIS SYMBOL MEANS

ATTENTION

BECOME ALERT

SIGNAL WORDS

Note use of the following signal words DANGER, WARNING, and CAUTION with safety messages. Appropriate signal word for each has been selected using the following guidelines:

DANGER:

Indicates an imminently hazardous situation that, if not avoided, will result in serious injury or death. This signal word is to be limited to the most extreme situations typically for machine components which, for functional purposes, cannot be guarded.

WARNING:

Indicates a potentially hazardous situation that, if not avoided, could result in serious injury or death, and includes hazards that are exposed when guards are removed. It may also be used to alert against unsafe practices.

CAUTION:

Indicates a potentially hazardous situation that, if not avoided, may result in minor or moderate injury. It may also be used to alert against unsafe practices.



OPERATION SAFETY

CAUTION: Always be sure that water has reached the pump before starting your sprayer. If the pump is run dry, serious damage to the pump will result.

CAUTION: Care must be taken; being sure the handgun is secured in place in the operators hand. If this is not done, a recoiling action may occur causing damage or personal injury.



LIGHTING AND MARKING

It is the responsibility of customer to know lighting and marking requirements of local highway authorities and to install and maintain sprayer to provide compliance with regulations. Add extra lights when transporting at night or during periods of limited visibility.

SAFETY SIGN CARE

- Keep safety signs clean and legible at all times.
- Replace safety signs that are missing or have become illegible.
- Replacement parts that displayed a safety sign should also display current sign.
- Safety signs are available from your distributor, dealer parts department, or factory.

BEFORE OPERATION

- Carefully study and understand this manual.
- Do not wear loose-fitting clothing which may catch in moving parts.
- Always wear protective clothing and substantial shoes.
- It is recommended that suitable protective hearing and eye protection be worn.
- The operator may come in contact with certain materials which may require specific safety equipment relative to handling of such materials. (Examples: extremely dusty, moulds, fungus, bulk fertilizers, etc.)
- Give sprayer a visual inspection for any loose bolts, worn parts, or cracked welds, and make necessary repairs. Follow maintenance safety instructions included in this manual.
- Be sure there are no tools lying on or in equipment.
- Do not use sprayer until you are sure that the area is clear, especially around children and animals.
- Don't hurry learning process or take sprayer for granted. Ease into it and become familiar with your new equipment.
- Practice operation of your equipment and its attachments. Completely familiarize yourself and other operators with its operation before using.
- Uses tractors equipped with Roll Over Protection System (ROPS) and fasten your seat belt prior to starting engine.
- Manufacturer does not recommend usage of a tractor with ROPS removed.
- Move tractor wheels to widest recommended settings to increase stability.
- Do not allow anyone to stand between tongue or hitch and towing vehicle when backing up to sprayer.

DURING OPERATION

- Beware of bystanders, PARTICULARLY CHILDREN! Always look around to make sure that it is safe to start engine of towing vehicle or move sprayer. This is particularly important with higher noise levels and quiet cabs, as you may not hear people shouting.
- NO PASSENGERS ALLOWED – Do not carry passengers anywhere on or in the tractor or sprayer.
- Keep hands and clothing clear of moving parts.
- Do not clean, lubricate, or adjust your sprayer while it is moving.

- When halting operation, even periodically, set tractor or towing vehicles brakes, disengage PTO, shut off engine, and remove ignition key.
- Be especially observant of operating area and terrain – watch for holes, rocks, or other hidden hazards. Always inspect area prior to operation.
- DO NOT operate near edge of drop-offs or banks.
- DO NOT operate on steep slopes as overturn may result.
- Operate up and down (not across) intermediate slopes.
- Avoid sudden starts and stops.
- Pick the most level possible route when transporting across fields. Avoid edges of ditches, gullies, and steep hillsides.
- Be extra careful when working on inclines.
- Periodically clear sprayer of bush, twigs, or other materials to prevent build-up of dry combustible materials.
- Manoeuvre tractor or towing vehicle at safe speeds.
- Avoid overhead wires. Contact with overhead lines could cause serious injury or death.
- Avoid loose gravel, rocks, and holes; they can be dangerous for sprayer operation or movement.
- Allow for unit length when making turns.
- Do not walk or work under raised components or attachments unless securely supported.
- Keep all bystanders, pets, and livestock clear of work area.
- Never stand alongside unit with engine running or attempt to start engine and/or operate machine while standing alongside unit.
- Never leave running equipment attachments unattended.
- As a precaution, always re-check hardware on equipment following every 100 hours of operation. Correct all problems.
- Follow maintenance safety procedures.

FOLLOWING OPERATION

- Following operation, or when unhitching, stop tractor or towing vehicle, set brakes, disengage PTO and all power drives, shut off engine and remove ignition key.
- Store unit in an area away from human activity.
- Do not park equipment where it will be exposed to livestock for long periods of time. Damage and livestock injury could result.
- Do not permit children to play on or around stored unit.
- Make sure all parked machines are on hard, level surface and engage all safety devices.

HIGHWAY AND TRANSPORT OPERATIONS

- SAFETY CHAINS: If equipment is going to be transported on a public highway, always follow state and local government regulations regarding safety chains and auxiliary lighting. Be sure to check with local law enforcement agencies for your own particular regulations.

- If required, safety chains should be used to retain connection between towing and towed machines in an event of separation of primary attaching system.
- Use a high strength, appropriately sized hitch pin with a mechanical retainer and attach safety chains.
- Criss-cross chains under tongue and secure to draw bar cage, mounting loops, or bumper frame.
- Adopt safe driving practices:
- Keep brake pedals latched together at all times. NEVER USE INDEPENDENT BRAKING WITH MACHINE IN TOW, LOSS OF CONTROL AND/OR UPSET OF UNIT CAN RESULT.
- Always drive at a safe speed relative to local conditions and ensure that your speed is low enough for an emergency stop. Keep speed to a minimum.
- Reduce speed prior to turns to avoid risk of overturning.
- Always keep tractor or towing vehicle in gear to provide engine braking when going downhill. Do not coast.
- Do not drink and drive!
- Comply with state and local laws governing highway safety and movement of farm machinery.
- Use approved accessory lighting flags and necessary warning devices to protect operators of other vehicles on highway during transport. Various safety lights and devices are available from you dealer.
- Use of flashing amber lights is acceptable in most localities. However, some localities prohibit their use. Local laws should be checked for all highway lighting and marking requirements.
- When driving a tractor and sprayer under 20mph (40kph) day or night, use flashing amber warning lights and a “slow moving vehicle” (SMV) identification emblem.
- Plan you route to avoid heavy traffic.
- Be a safe and courteous driver. Always yield to oncoming traffic in all situations, including narrow bridges, intersections, etc.
- Be observant of bridge loading ratings. Do not cross bridges rated lower than gross weight at which you are operating.
- Watch for obstructions overhead and side-to-side while transporting.
- Always operate equipment in a position to provide maximum visibility at all times. Make allowances for increased length and weight of sprayer when making turns, stopping, etc.

PERFORMING MAINTENANCE

- Clean filter after first use and then after every 3 to 4 tanks.
- Good maintenance is your responsibility. Poor maintenance is an invitation to trouble.

- Make sure there is plenty of ventilation. Never operate engine of towing vehicle in a closed building. Exhaust fumes may cause asphyxiation.
- Before working on this machine, stop towing vehicle, set brakes, disengage PTO and all power drives, shut off engine and remove ignition key.
- Be certain all moving parts and attachments have come to a complete stop before attempting to perform maintenance.
- Always use a safety support and block wheels. Never use a jack to support machine.
- Always use proper tools or equipment for job at hand.
- Use extreme caution when making adjustments.
- Follow torque chart on page 9 of this manual when tightening bolts and nuts.
- Never use you hands to locate a hydraulic leak on attachments. Use a small piece of cardboard or wood. Hydraulic fluid escaping under pressure can penetrate skin.
- Openings in skin and minor cuts are susceptible to infection from hydraulic fluid. Without immediate medical treatment, serious infection and reactions can occur.
- When disconnecting hydraulic lines, shut off hydraulic supply and relieve all hydraulic pressure.
- Replace all shields and guards after servicing and before moving.
- After servicing, be sure all tools, parts, and service equipment are removed.
- Do not allow grease or oil build up on any step or platform.
- When replacing bolts, refer to owner’s manual.
- Where replacement parts are necessary for periodic maintenance and servicing, genuine factory replacement parts must be used to restore your equipment to original specifications. Manufacturer will not claim responsibility for use of unapproved parts or accessories and other damages as a result of their use.
- If equipment has been altered in any way from original design, manufacturer does not accept any liability for injury of their use.
- A fire extinguisher and first aid kit should be kept readily accessible while performing maintenance on this sprayer.
- After using the Boom Sprayer remove the pump & make it oil filled, don’t leave it dry.

SPRAYER CHECKLIST

Downtime caused by field breakdowns is costly and time consuming. Many breakdowns can be eliminated by periodic equipment maintenance. By spending time reviewing this checklist before seasonal spraying application time and following proper after-season care, you can save time and money later.

WARNING

To Prevent Serious Injury Or Death

- **Keep hands, feet, and loose clothing away from rotating parts.**
- **Wear protective clothing recommended by your chemical and fertilizer manufacturer when working with chemicals.**

Check BEFORE going into field

1. NOZZLES

Check tip for excessive wear by checking for grooves in or near tip opening. Check nozzle spacing by starting at center and working outwards. Check boom for proper height.

2. HOSES

Check all hoses for worn or soft spots. Be sure all hose clamps are tightened and hoses are not kinked or pinched. Check for leakage in any lines.

3. TANK

Remove and clean agitator orifices. Check orifices for excessive wear by checking for grooves in or near orifice opening. Inspect fitting and grommets to insure they are in good condition.

4. CONTROLS

Check for leakage, plugging or wear on all valves, fittings, etc. Clean off any build up of foreign material.

5. PUMP

Check to be sure pump turns freely.

6. FRAME

Be sure all bolts are tightened.

7. REPLACEMENT PARTS

Replace all worn or damaged parts.

AFTER Season Care:

NOTE: It is important to wear proper safety equipment when cleaning the sprayer. See your chemical or fertilizer package for this information.

1. After spraying chemicals, run water mixed with cleaners through tank, pump and all hose hook-ups. If wettable powder dries out in the system, it is very difficult to put back into suspension and can cause malfunction, damage or injury.
2. When cleaned, tank should have all openings closed or covered to keep dirt from entering.
3. Pump should be flushed with RV anti-freeze and pump ports plugged to keep out moisture and air.
4. Disassemble tips and rinse with water or cleaning solution. (Appropriate for chemical sprayed).
5. Clean tip opening with a wooden toothpick. Never use wire or hard objects that could distort the opening.
6. Dispose of all unused chemicals or solutions in a proper and ecologically sound manner.
7. Rinse tips with water and dry thoroughly before storing.



REMEMBER!

Your best assurance against accidents is a careful and responsible operator. If there is any portion of this manual or function you do not understand, contact your local authorised dealer or manufacturer.

| MODEL | | SERIAL No. | | DELIVERY DATE | |
|---|--|------------|---|---------------|------------------|
| DEALER NAME | | | OWNERS DETAILS | | |
| ADDRESS | | | Title: (please circle) Mr Mrs | | Ms |
| | | | First Name | | Last Name |
| STATE | | | ADDRESS | | |
| | | | STATE | P/CODE | |
| I, on behalf of the above Dealership hereby state: - 1) That the machine listed above is new and that in the case of; a) A boomspray - The procedures set down in the "Dealer Start Up List" enclosed have been carried out by qualified personnel from the above dealership. b) Other Equipment - A thorough inspection has been carried out by qualified personnel from the above Dealership. 2) That I have fully explained the warranty provided with the machine, as described in this book, including its coverage, exclusions and limitations, to the owner. 3) That I have explained the importance of correct and regular service, the use of only genuine replacement parts and the use of appropriate lubricants and oils to the owner. 4) That I have explained the safety aspects of the machine to the owner as well as the need to maintain in good working order the safety and accident prevention equipment affixed to or supplied with the machine as well as the importance of making no modification to the machine without Premier Crop Protection Equipments consent. 5) That I have supplied to the owner and drawn to his attention the Owner's Manual and other related documents for the machine. SIGNATURE _____ <i>(Person authorised to sign for the Dealer)</i> NAME _____ DATE _____ | | | PHONE NUMBER | | |
| | | | I, We hereby acknowledge:- | | |
| | | | 1) I/We have received and accepted delivery of the machine described above. | | |
| | | | 2) That the machine listed above is new and that in the case of ; a) A boomspray - The procedures set down in the "Dealer Start Up List" enclosed have been carried out by the Dealer. b) Other equipment – A thorough inspection has been carried out by the Dealer. | | |
| | | | 3) That it is complete and fitted with all equipment as per my/our order. | | |
| | | | 4) That I/We are satisfied that the machine was thoroughly checked by the Dealer for loose or missing parts and has been adjusted in accordance with the operators manual. | | |
| | | | 5) That I have read and understand the nature and extent of the Warranty and understand clearly that (except as otherwise required by law) there are no other representations or warranties, either expressed or implied, made by anyone in relation to the purchase of the Machine. | | |
| | | | 6) That the safety and operation of this machine has been explained to my satisfaction by the Dealer. | | |
| | | | 7) I have received the relevant operators manual for this machine. | | |
| | | | SIGNATURE _____ | | |
| | | | DATE _____ | | |

**THIS FORM MUST BE COMPLETED AND SENT TO:
FIELDKING PVT LTD**

SAFETY ACKNOWLEDGMENT

TO BE COMPLETED BY THE OWNER AT THE POINT OF DELIVERY OF THE MACHINE

To comply with both State and Federal laws as may be applicable, it is important that you carefully read the following information and fill in this form where indicated below. If you are unsure of any point your Dealer will be able to assist you.

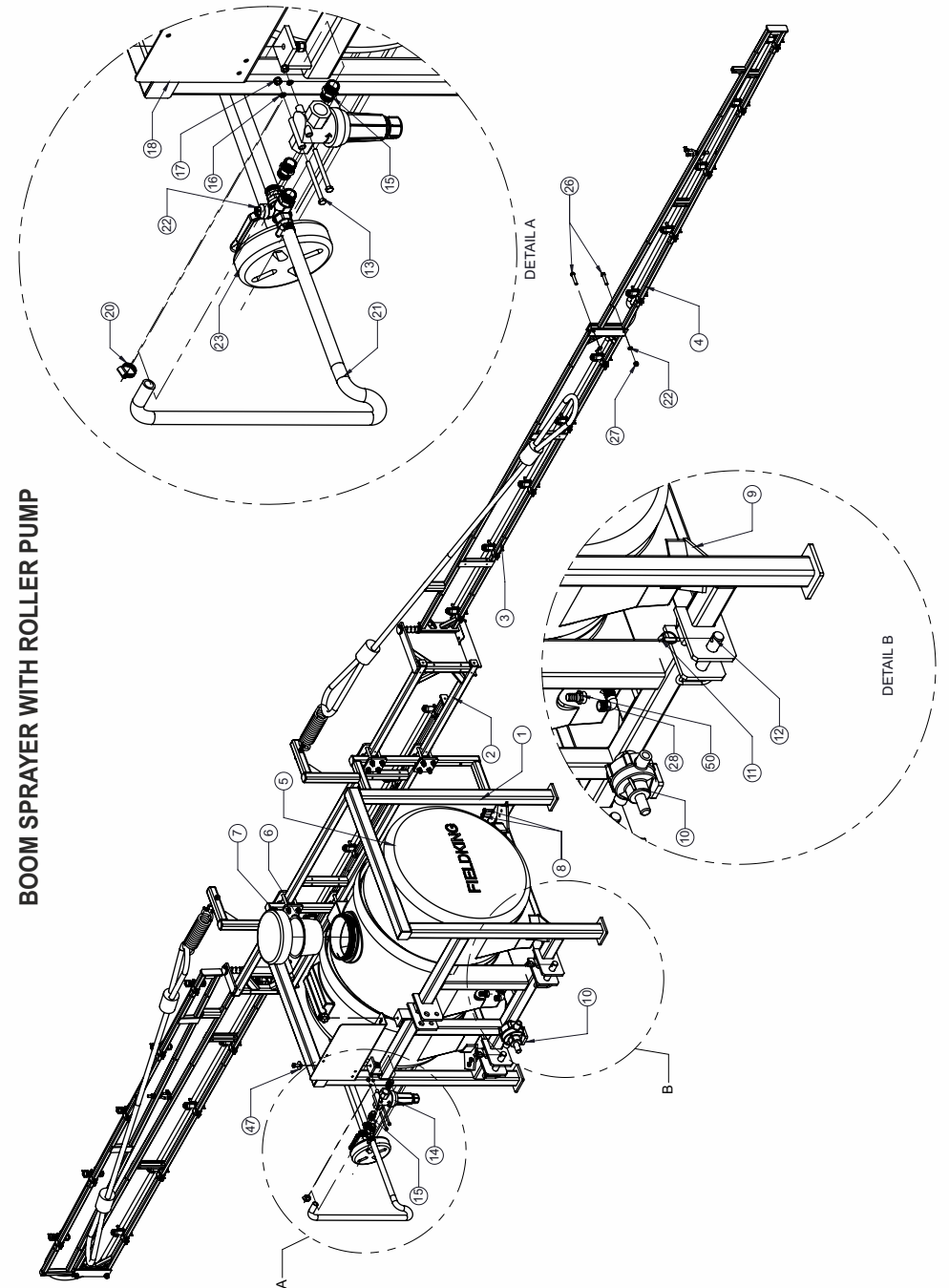
With reference to the machine identified below, I/We (the Owner or the Owners appointed agent) declare that:

1. The Dealer has supplied and I/We have read, the correct Operator's Manual applicable to the machine I/We have purchased and that I/We have been given instruction on the safe operation of the machine by the Dealer.
2. I/We have been shown by the Dealer, the locations of the safety and warning decals, the safety shields and other safety equipment as are fitted and do understand their importance.
3. I/We have been shown by the Dealer written information produced by FIELDKING Equipment relating to the safety aspects of the machine and the Dealer has explained the importance of making no modifications to the machine without FIELDKING assistance.
4. I/We understand and acknowledge that FIELDKING Equipment shall be under no liability and shall bear no responsibility in the event that I/We affix or attach ancillary items to or otherwise make modifications to the machine, without Agricultural Machinery's approval, such that the machine is rendered less safe.
5. I/We are aware that the machine must not be operated if any of the safety shields, decals or safety devices are damaged or have been disconnected or removed or if operation of the machine could be deemed unsafe.
6. I/We have been advised by the Dealer on the proper operation, maintenance and lubrication procedures for the machine.
7. I/We have been instructed and understand the application, limitations and capacities that the machine was designed and recommended for, all as described in the Operators Manual.
8. I/We undertake to ensure that all users of the machine will be instructed in the correct safety, operational and maintenance requirements of the machine as outlined in the Operators Manual and any other literature published by the Company.

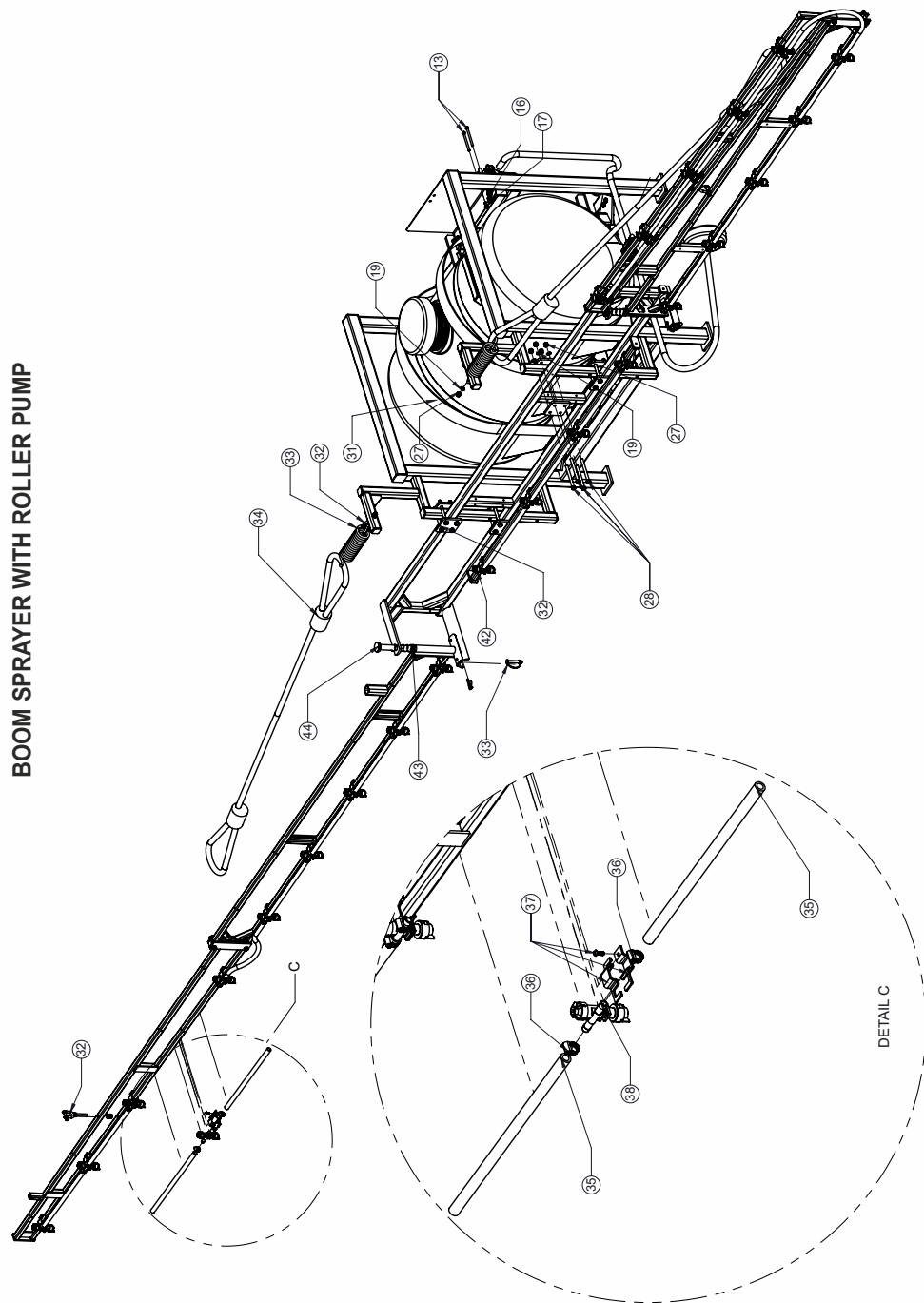
| | |
|--------------|-------------------|
| MODEL | SERIAL No. |
|--------------|-------------------|

| | |
|-------------|--------------|
| Name | Title |
|-------------|--------------|

| | |
|------------------|-------------|
| Signature | Date |
|------------------|-------------|



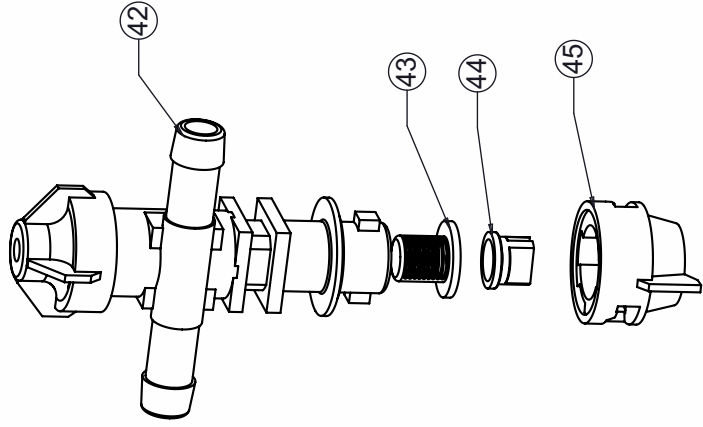
BOOM SPRAYER WITH ROLLER PUMP



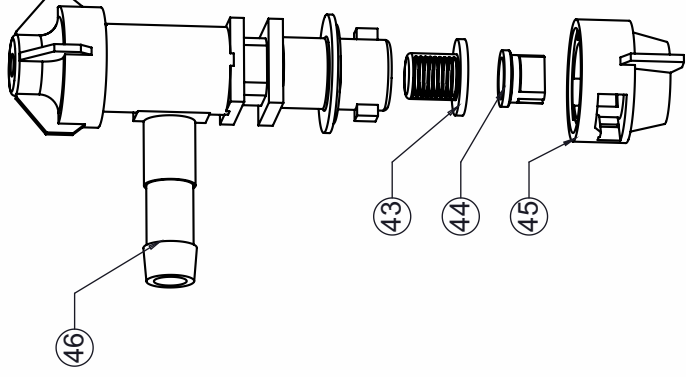
BOOM SPRAYER WITH ROLLER PUMP

| SR. NO | DESCRIPTION | ITEM CODE | | QTY | |
|--------|---|-------------------|-------------------|--------|--------|
| | | 550 LTR | 1100 LTR | 10 MTR | 12 MTR |
| 1 | BOOM SPRAYER FRAME ASSEMBLY | 70660031 | 70660030 | | 1 |
| 2 | MAIN BOOM FRAME ASSEMBLY | 70660020 | | | 1 |
| 3 | INNER BOOM FRAME ASSEMBLY | 70660014 (12 MTR) | 70660072 (10 MTR) | | 2 |
| 4 | OUTER BOOM FRAME ASSEMBLY | 70660006 (12 MTR) | 70660073 (10 MTR) | | 2 |
| 5 | BOOM SPRAYER TANK | 10300352 | 10300350 | | 1 |
| 6 | BASKET FILTER(210X188X120) 300112 | 10600021 | | | 1 |
| 7 | TANK COVER WITH O RING (BOOM SPRAYER) | 10300424 | | | 1 |
| 8 | HEX HEAD BOLT M12X40X1.75MM (8.8 GRADE) (30MM THREAD) | 10260355 | | | 10 |
| 9 | CORNER SUPPORT CLAMP (BOOM SPRAYER) | 70660054 | | | 4 |
| 10 | BOOM SPRAYER ROLLER PUMP | 10300332 | | | 1 |
| 11 | LINCH PIN 10MM | 10020022 | | | 5 |
| 12 | TILLER PIN 28X145MM WITH HANDLE | 10020047 | | | 2 |
| 13 | HEX HEAD BOLT M8X1.25PX100 | 10260778 | | | 2 |
| 14 | BOOM SPRAYER LINE STRAINER BIG | 10300334 | | | 1 |
| 15 | 3/4 INCH CLOSE NIPPLE | 10600013 | | | 1 |
| 16 | SPRING WASHER 8MM | 10270001 | | | 4 |
| 17 | NYLOCK NUT M8X1.25MM | 10280027 | | | 4 |
| 18 | BOOM SPRAYER CONTROL UNIT MOUNTING PLATE | 70660121 | | | 1 |
| 19 | SPRING WASHER 12MM | 10270003 | | | 38 |
| 20 | HOSE CLAMP 3/4 INCH | 20050728 | | 48 | 56 |
| 21 | SPRAY HOSE PIPE 20 MM ID | 10300344 | | 10 MTR | |
| 22 | 3 WAY VALVE 3/4 INCH BSP (BOOM SPRAYER) | 10600018 | | | 1 |
| 23 | SUCTION FILTER FOR 20 MM HOSE (BOOM SPRAYER) | 10600024 | | | 1 |
| 24 | 3/4 INCH CLOSE NIPPLE (BOOM SPRAYER) | 10600013 | | | 1 |
| 25 | ELBOW 3/4 INCH BSP | 10600009 | | | 1 |
| 26 | HEX HEAD BOLT 12X60X1.75MM (8.8 GRADE) HALF THREAD | 10260356 | | | 4 |
| 27 | NYLOCK NUT M12X1.75 (P) | 10280025 | | | 42 |
| 28 | HEX HEAD BOLT M12X125X1.75MM(8.8 GRADE)-HALF THREAD | 10260336 | | | 16 |
| 29 | BOOM MOUNTING PLATE | 70660067 | | | 4 |
| 30 | WIRE LOCK PIN | 10020114 | | | 2 |
| 31 | BOOM SPRAYER TANK HOLDING BELT WITH CLAMP 8 FEET | 10600025 | | | 2 |
| 32 | D SHACKLE 12MM | 20051692 | | | 4 |
| 33 | BOOM HOLDER SPRING | 10210032 | | | 2 |
| 34 | MS WIRE ROPE 6MM | 52090087 | | | 8 MTR |
| 35 | SPRAY HOSE PIPE 13 MM ID | 10300343 | | 25 MTR | 27 MTR |
| 36 | HOSE PIPE CLAMP (8-22 MM) | 10300351 | | 15 | |
| 37 | SQUARE CLAMP 1 INCH (BOOM SPRAYER) | 10300340 | | 20 | 24 |
| 38 | SPRAY NOZZLE ASSEMBLY DOUBLE (BOOM SPRAYER) | 10300348 | | 17 | 21 |
| 39 | SPRAY NOZZLE ASSEMBLY SINGLE (BOOM SPRAYER) | 10300349 | | 3 | 3 |
| 40 | BOOM SPRING (OD 32 X ID 26 X 110 LENGTH) | 10600020 | | | 2 |
| 41 | DRAWBAR JOINT PIN 25X355MM (L) | 10020021 | | | 2 |
| 42 | BOOM SPRAYER NOZZLE BODY DOUBLE | 10300335 | | | 1 |
| 43 | BOOM SPRAYER TIP STRAINER | 10300338 | | | 1 |
| 44 | BOOM SPRAYER SPRAY TIP | 10300337 | | | 1 |
| 45 | BOOM SPRAYER CAP WITH GASKET SEAT | 10300339 | | | 1 |
| 46 | BOOM SPRAYER NOZZLE BODY SINGLE | 10300336 | | | 1 |
| 47 | PLAIN WASHER 12MM | 10270010 | | | 2 |
| 48 | BOOM SPRAYER SPRAY GUN (NOT SHOWN IN IMAGE) | 10300341 | | | 1 |
| 49 | BOOM SPRAYER CONTROL UNIT COMPLETE ASSEMBLY WITH PRESSURE GAUGE | 10300333 | | | 1 |
| 50 | NOZZLE 3/4 INCH (S.S.) | 20051755 | | | 4 |

Nozzle Assembly



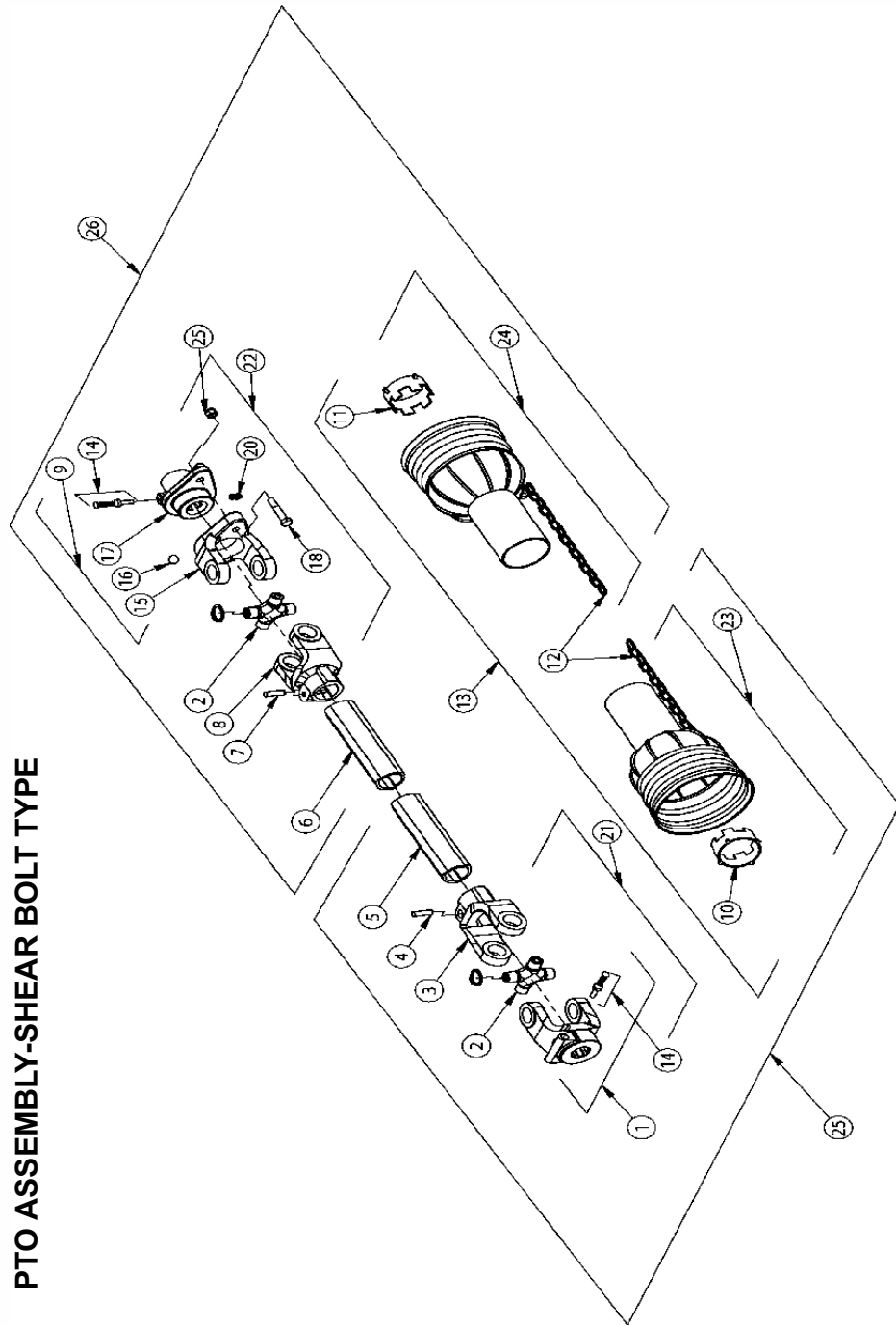
Double Body



Single Body

| BOOM SPRAYER WITH ROLLER PUMP | | | | | |
|-------------------------------|-----------------------------------|-----------|----------|--------|--------|
| SR. NO | DESCRIPTION | ITEM CODE | | QTY | |
| | | 550 LTR | 1100 LTR | 10 MTR | 12 MTR |
| 42 | BOOM SPRAYER NOZZLE BODY DOUBLE | | 10300335 | | 1 |
| 43 | BOOM SPRAYER TIP STRAINER | | 10300338 | | 1 |
| 44 | BOOM SPRAYER SPRAY TIP | | 10300337 | | 1 |
| 45 | BOOM SPRAYER CAP WITH GASKET SEAT | | 10300339 | | 1 |
| 46 | BOOM SPRAYER NOZZLE BODY SINGLE | | 10300336 | | 1 |

PTO ASSEMBLY-SHEAR BOLT TYPE



| MINI RT P.T.O PART LIST (10310098) | | |
|------------------------------------|---------------------------------------|-----------|
| SR.NO. | DESCRIPTION | ITEM CODE |
| 1 | PUSH PIN YOKE | 10310099 |
| 2 | CROSS JOURNAL SET | 10310100 |
| 3 | OUTER YOKE | 10310101 |
| 4 | ROLL PIN FOR OUTER TUBE | 10310102 |
| 5 | OUTER TUBE | 10310103 |
| 6 | INNER TUBE | 10310120 |
| 7 | ROLL PIN FOR INNER TUBE | 10310121 |
| 8 | INNER YOKE | 10310106 |
| 9 | COMPLETE SHERE BOLT | 10310107 |
| 10 | GUARD RETAINING COLLAR FOR OUTER TUBE | 10310108 |
| 11 | GUARD RETAINING COLLAR FOR INNER TUBE | 10310109 |
| 12 | SAFTY CHAIN | 10310110 |
| 13 | COMPLETE GUARD ASSAMBLY | 10310111 |
| 14 | PUSH PIN SET | 10310112 |
| 15 | YOKE FOR B02 | 10310113 |
| 16 | BALL | 10310114 |
| 17 | HUB B02 | 10310115 |
| 18 | SAFETY BOLT M8x50x1.25 | 10260640 |
| 19 | NUT M8x1.25 | 10280027 |
| 20 | GREASE FITTING | 10310020 |
| 21 | U JOINT FOR OUTER TUBE | 10310116 |
| 22 | U JOINT FOR INNER TUBE | 10310117 |
| 23 | HALF FEMALE GUARD ASSEMBLY | 10310119 |
| 24 | HALF MALE GUARD ASSEMBLY | 10310118 |
| 25 | HALF FEMALE SHAFT | 10310120 |
| 26 | HALF MALE SHAFT | 10310121 |

DELIVERY CHECKLIST

| Dealer Pre-Delivery (Please Tick) | Please Complete all Dealer information Below |
|---|---|
| <p>1. Dealer Pre-Delivery Checklist</p> <ol style="list-style-type: none"> 1. The customer or person responsible has been given the operator's manual. 2. The customer undertakes to read the complete operator's manual and understands all aspects of the manual before operation of the machine. 3. All safety, operational and maintenance information have been explained and demonstrated. 4. All greasing and oil points, stickers, guarding and ID plate have been identified and physically pointed out. 5. The customer agrees that it is his responsibility to read and carry out the safety, maintenance and operation as per this operator's manual. | <p>Dealer Information</p> <p>Dealer's Name.....</p> <p>Address.....</p> <p>State..... Postcode.....</p> <p>Phone..... Fax.....</p> <p>Email.....</p> <p>Service Person.....</p> <p>I confirm that the pre-delivery service was performed on this machine.</p> <p>Signature.....</p> <p>Date.....</p> <p>Comments.....</p> |
| Customer Delivery (Please Tick) | Please Complete all Customer Information Below |
| <p>2. Customer Delivery Checklist</p> <ol style="list-style-type: none"> 1. The customer or person responsible has been given the operator's manual. 2. The customer undertakes to read the complete operator's manual and understands all aspects of the manual before operation of the machine. 3. All safety, operational and maintenance information have been explained and demonstrated. 4. All greasing and oil points, stickers, guarding and ID plate have been identified and physically pointed out. 5. The customer agrees that it is his responsibility to read and carry out the safety, maintenance and operation as per this operator's manual. | <p>Customer Information</p> <p>Customer's Name.....</p> <p>Address.....</p> <p>State..... Postcode.....</p> <p>Phone..... Fax.....</p> <p>Email.....</p> <p>Delivery Person.....</p> <p>I confirm that all of the delivery checks were explained and performed.</p> <p>Signature.....</p> <p>Delivery Date.....</p> <p>Comments.....</p> |

FIELDKING

WARRANTY CARD Customer Copy

CUSTOMER NAME Mr./ Mrs :

ADDRESS :

MOBILE NO. :

Email :

NAME OF IMPLEMENT :

MODEL NO. :

YEAR OF Mfg. :

SERIAL NO. :

REGISTRATION NO. :

DATE OF PURCHASING :

NAME OF DEALER :

Customer's Signature

Dealer's Signature



Beri Udyog Pvt. Ltd.

Corporate Office : Plot No. 235-236 & 238-240, Sec-3, HSIIDC,
Karnal- 132001 (Haryana), India ☎ +91-184-2221571/ 72/ 73

✉ marketing@fieldking.com, exports@fieldking.com, 🌐 www.fieldking.com

FIELDKING

WARRANTY CARD Company Copy

CUSTOMER NAME Mr./ Mrs :

ADDRESS :

MOBILE NO. :

Email :

NAME OF IMPLEMENT :

MODEL NO. :

YEAR OF Mfg. :

SERIAL NO. :

REGISTRATION NO. :

DATE OF PURCHASING :

NAME OF DEALER :

Customer's Signature

Dealer's Signature



Beri Udyog Pvt. Ltd.

Corporate Office : Plot No. 235-236 & 238-240, Sec-3, HSIIDC,
Karnal- 132001 (Haryana), India ☎ +91-184-2221571/ 72/ 73

✉ marketing@fieldking.com, exports@fieldking.com, 🌐 www.fieldking.com

FIELDKING

WARRANTY CARD

Dealer Copy

CUSTOMER NAME Mr./ Mrs :

ADDRESS :

MOBILE NO. :

Email :

NAME OF IMPLEMENT :

MODEL NO. :

YEAR OF Mfg. :

SERIAL NO. :

REGISTRATION NO. :

DATE OF PURCHASING :

NAME OF DEALER :

Customer's Signature

Dealer's Signature



Beri Udyog Pvt. Ltd.

Corporate Office : Plot No. 235-236 & 238-240, Sec-3, HSIIDC,
Karnal- 132001 (Haryana), India ☎ +91-184-2221571/ 72/ 73

✉ marketing@fieldking.com, exports@fieldking.com, 🌐 www.fieldking.com