

# FIELDKING

Multi Crop Row Planter



➤ [Operator Manual](#) ➤ [Service Manual](#) ➤ [Part Catalogue](#)

# CONGRATULATIONS!

You have invested in one of the best implements of its type in the market today.

The care you give your “FIELDKING” implement will greatly determine your satisfaction with its performance and its service life. A careful study of this manual will give you a thorough understanding of your new implement before operating.

If your manual is lost or destroyed, “FIELDKING” will be glad to provide you a new copy. Visit to nearest dealership & get a copy. Most of our manuals can also be downloaded from our website at [www.fieldking.com](http://www.fieldking.com).

As an authorized “FIELDKING” dealer, we stock genuine “FIELDKING” parts which are manufactured with the same precision and skill as our original equipment. Our trained service persons are well informed on methods required to service “FIELDKING” equipments and are ready to help you.

Should you require additional information or assistance, please contact us.

YOUR AUTHORIZED

FIELDKING DEALER

BECAUSE “FIELDKING” MAINTAINS AN ONGOING PROGRAMME OF PRODUCT IMPROVEMENT, WE RESERVE THE RIGHT TO MAKE IMPROVEMENTS IN DESIGN OR CHANGE IN SPECIFICATION WITHOUT INCURRING ANY OBLIGATION TO INSTALL THEM ON UNITS PREVIOUSLY SOLD. BECAUSE OF THE POSSIBILITY THAT SOME PHOTOGRAPHS IN THIS MANUAL WERE TAKEN OF PROTOTYPE MODELS, PRODUCTION MODELS MAY VARY IN SOME DETAIL. IN ADDITION, SOME PHOTOGRAPHS MAY SHOW SHIELDS REMOVED FOR THE PURPOSE OF CLARITY. NEVER OPERATE THIS IMPLEMENT WITHOUT ALL SHIELDS IN PLACE.

## TO THE PURCHASER

This manual contains valuable information about your new "FIELDKING" Multi Crop Row Planter. It has been carefully prepared to give you helpful suggestions for operating, adjusting, servicing and ordering spare parts.

Keep this manual in a convenient place for quick and easy reference. Study it carefully. You have purchased a dependable and sturdy Multi Crop Row Planter but only by proper care and operation you can expect to receive the service and long life designed and built into it.

Sometime in the future your Multi Crop Row Planter may need new parts to replace which are worn out or broken. If so, go to your dealer and provide him equipment's detail like model and part number.

## CUSTOMER INFORMATION

Name \_\_\_\_\_

Purchased From \_\_\_\_\_

Date of Purchase \_\_\_\_\_

Model No. \_\_\_\_\_

Serial No. \_\_\_\_\_

## PURCHASER / OPERATOR'S RESPONSIBILITY

1. Read and understand the information contained in this manual.
2. Operate, lubricate, assemble and maintain the equipment in accordance with all instructions and safety procedures in this manual.
3. Inspect the equipment and replace or repair any parts that are damaged or worn out which under continued operation would cause damage, wear to other parts, or cause a safety hazard.
4. Return the equipment or parts to the authorized "FIELDKING" dealer, from where it was purchased, for service or replacement of defective parts that are covered by warranty. (The "FIELDKING" Factory may inspect equipment or parts before warranty claims are honored.)
5. All costs incurred by the dealer for traveling to or transporting the equipment for warranty inspection and claims will be borne by the customer.

## 1. TECHNICAL DATA

- 1.1 Introduction
- 1.2 Warranty
- 1.3 When the warranty becomes void
- 1.4 Usage Instruction
- 1.5 Maintenance
- 1.6 Re-assembly parts
- 1.7 Major assemblies & part list

## 1. TECHNICAL DATA

### 1.1 INTRODUCTION

#### Multi Crop Row Planter

This handbook contains the use and maintenance instructions with a list of spare parts of Multi Crop Row Planter machine.

Fieldking Multi Crop Row Planter machine is high performance designed machine used to sow seed of wide variety and size. Due to its precise metering system this is achieved accurately and economically.

Regular and satisfactory operations together with economic and long lasting use of the implement depends upon the compliance with instructions given in this book.

Compliance with instructions given in this handbook is also important since manufacturer declines all and every responsibility for damage to persons or property cause by negligence and failure to comply with these instructions.

### 1.2 WARRANTY

When the implement is delivered, check that it has not been subjected to damage during transport and that the accessories are in a perfect condition and complete.

Any claims following the receipt of damaged goods shall be presented in writing within 8 days from the receipt of the goods.

The purchaser may only make the claims under warranty. When he has complied with the warranty conditions in the supply contract.

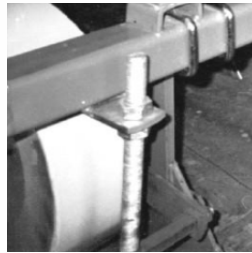
### 1.3 WHEN THE WARRANTY BECOMES VOID

Besides the cases specified in the supply agreement, the warrantee shall in any case become void:

1. When the implement has been used beyond the specified power limit like (Tractor Horse Power)
2. When repairs made by the customer without authorization from the manufacturer or owing to installation of spurious spare parts, the machine is subjected to variations and the damage can be ascribed to these variations.
3. When the user has failed to comply with the instructions in this handbook.
4. No warranty will be given if the service and greasing is not done on time.

## 1.4 USAGE INSTRUCTION

1. Check seed and fertilizer boxes, there should not be any metal piece or any hard material capable of damaging metering system.
2. Place the planter on levelled plain surface to adjust the depth of sowing as desired. By adjusting the height of side balancing wheels and we can get the desired depth of sowing. For the vertical movement of balancing side wheels a special long bolt and nut arrangement is provided. By loosening and tightening the nut we can adjust the height of side balancing wheels. As we lower the wheels the depth of sowing decreases and as we lift the wheels the sowing depth increases.



3. Before sowing, the front and rear tines should be in same horizontal plane, this levelling of tines can be done by adjusting the TOP LINK of tractor.

4. **SEED METERING METHOD:** As the machine is Multi Crop Row Planter the seed metering system is different from that of seed drill. In this there are small seed hoppers in which the inclined discs rotates. As the disc rotates, the cells on the periphery of disc picks the seeds and drop in the seed funnel and from funnel through seed tube the seeds go to tine boot.



For controlling missing or doubling the option of seed chambers' inclination is provided. To increase / decrease the seed rate separate Sprockets are also provided. As the size of the sprockets decreases the Seed rate will increase.

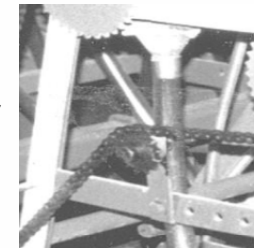
To increase and decrease the seed rate, different sprockets are provided which control the revolutions of seed picking disc and controls the seed rate. These sprockets can be easily changed and are located under chain cover on the right side of the planter (change only seed shaft sprocket only, when required).

5. **FERTILIZER METERING:** There is also an index plate for fertilizer metering which is provided on fertilizer box. Here the index plate is graduated with a pre-calibrated scale. There is a needle, which moves over this plate, which indicates the quantity of fertilizer. The separate long fertilizer lever is provided in front of the planter which is meant for the movement of needle (i.e. to increase/decrease the quantity of fertilizer). With the every increment (like 2 to 4), 20 kg/Acre of fertilizer can



increased or decreased. Don't touch or move the needle forcibly to increase or decrease the quantity of fertilizer, instead move the fertilizer lever. After adjusting the quantity of fertilizer lock the chuck nut, which is provided on the left side of the Planter. Once after locking the chuck nut, when we again open the supply of fertilizer after closing the supply, the quantity will remain same, as we have adjusted before. (Be sure not to unlock the chuck nut).

6. For keeping tension in the chain a special spring loaded idler is provided.



7. To adjust row-to-row distance of tines loosen the two "U" clamps of tine and set the distance as desired and then tighten the clamps fully.



8. For observing the sowing operation a wooden platform is provided at the back of machine for sitting/standing of helper.



## 1.5 MAINTENANCE:

Although Multi Crop Row Planter is relatively simple machine. The proper lubrication of the machine wherever is needed is highly important if satisfactory performance and long life are to be ensured.

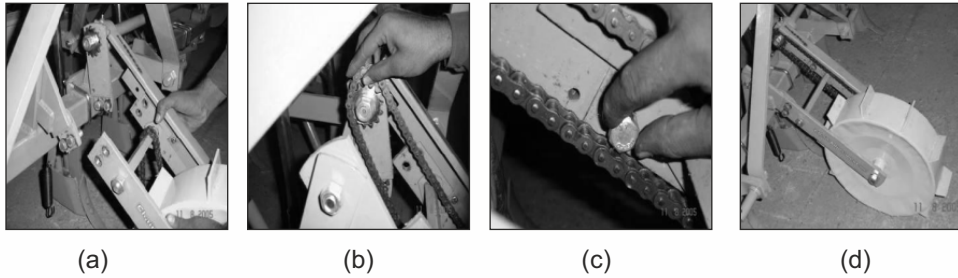
1. Oil and grease all the moving parts daily before sowing (All wheels, Shafts, grease cups etc.).
2. There is one steel strip that moves horizontally beneath the fertilizer box having the width of 1.5", oil this strip also regularly.
3. After sowing but before storing the Planter take it to any service station so that the Planter can be cleaned / washed thoroughly with the high-pressure water spray. But remember after the spray of water, apply diesel in both boxes and smaller seed

hoppers with the help of brush or piece of cloth to prevent the box from rusting. It is important that planter should be parked in covered area and away from direct sun light.

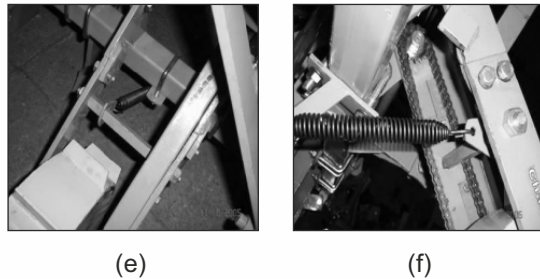
4. After regular intervals clean and paint both the boxes and smaller seed hoppers.
5. Before re-using machine in next sowing season, all moving & rotating parts should work freely/properly. To ensure the proper working oil all the moving / rotating parts like discs shafts, fertilizer shaft, front & side wheels and then rotate the front wheel with hand. Check that whether the parts are working properly or not. In case the parts are not working properly oil the moving parts and after some time, rotate the front wheel with hand again to check that is it moving/rotating freely.

### 1.6 RE-ASSEMBLING OF DIFFERENT PARTS OF MACHINE TO RIGHT POSITION FOR ITS PROPER WORKING

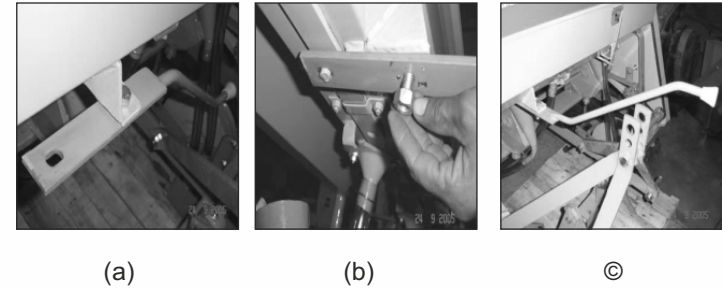
1. **Central Wheel:** Central wheel is fixed inside the frame; take it out by unscrewing bolts. It should be fixed in centre of machine at front. Fix it as shown in pictures.



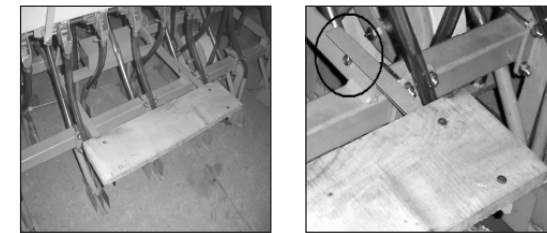
After fixing wheel, put tension spring in ring which is provided on wheel (see figures)



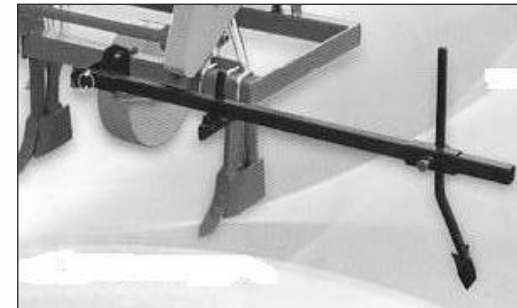
2. **Fertilizer Handle:** The fertilizer handle is bolted under hopper. Unscrew the bolts and take the handle out. Now as shown in figures, fix the handle in show position. Bolt the handle in same hole but in right position. Do not forget to check nut it (use double nut).



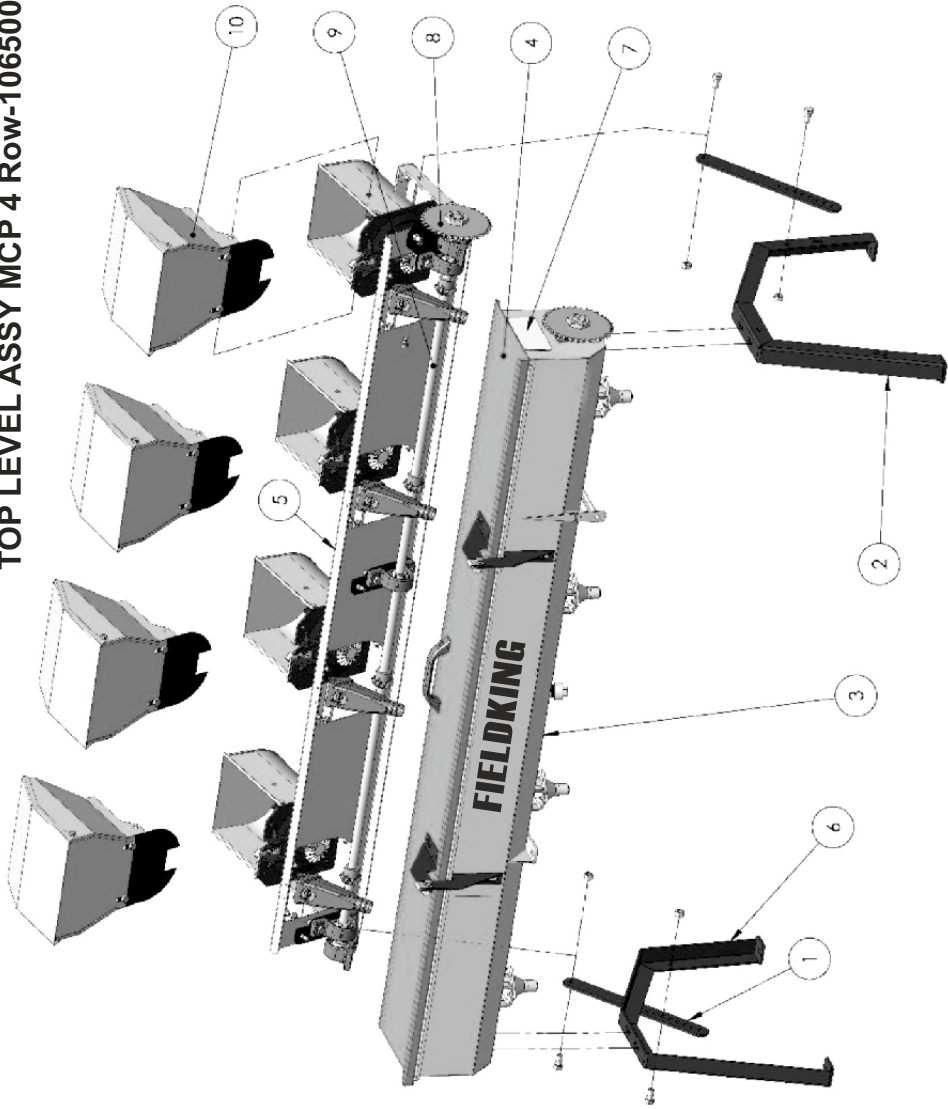
3. **Rear Platform:** Fix the Platform in vertical position as shown in figure and bolt it with frame.



4. Attach the marker as shown in figure

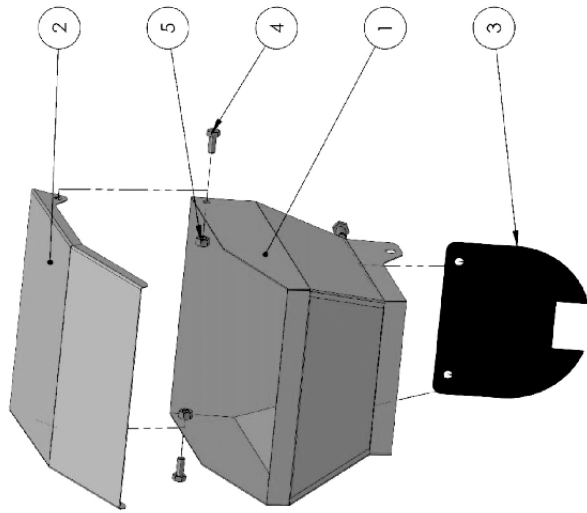
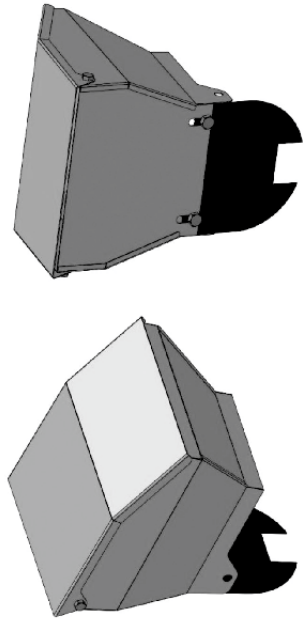


TOP LEVEL ASSY MCP 4 Row-10650083



TOP LEVEL ASSY MCP 4 Row-10650083			
SR NO	ITEM NAME	PART CODE	QTY
1	HOPPER MOUNTING LEFT	10650001	1
2	HOPPER MOUNTING RIGHT	10650002	1
3	HOPPER-FERTILIZER 4 ROW PLANTER COMPLETE	10650003	1
4	COVER-FERTILIZER HOPPER 4 ROW	10650004	1
5	CHANNEL-SEED CHANNEL 4 ROW PLANTER	10650005	1
6	FLAT INCLINATION	10650006	2
7	PLATE MODEL	10650007	1
8	SPROCKET 37 TEETH	10650008	2
9	SAFT-SEED 4 ROW MULTI CROP PLANTER	10650009	1
10	EXTENSION-SEED HOPPER	10650010	4

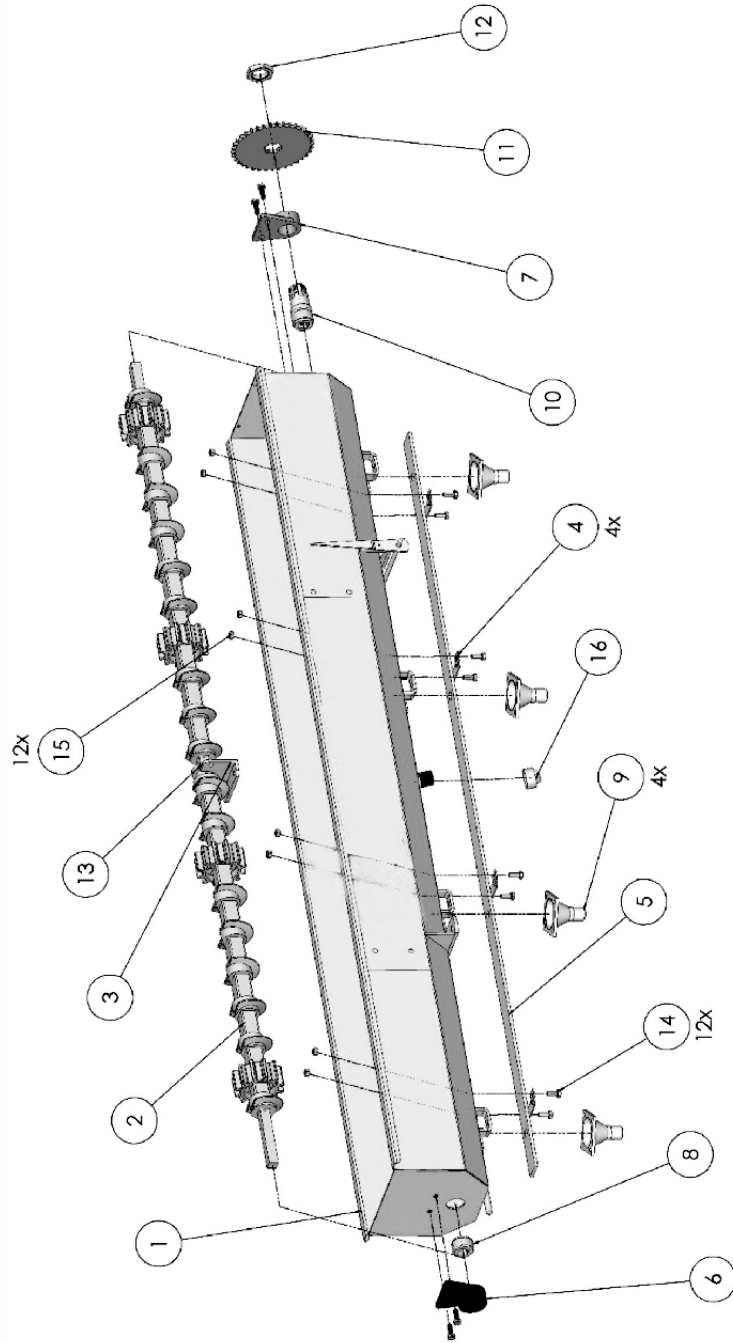
EXTENSION-SEED HOPPER (HOP-0005)-10650084



EXTENSION-SEED HOPPER (HOP-0005)-10650084			
SR NO	ITEM NAME	PART CODE	QTY
1	EXTENSION - SEED HOPPER	10650011	1
2	COVER - SEED HOPPER EXTENSION	10650012	1
3	SEED GATE - SEED HOPPER EXTENSION	10650013	1
4	BOLT - M8X20	10260794	4
5	NUT- M8	10280247	4

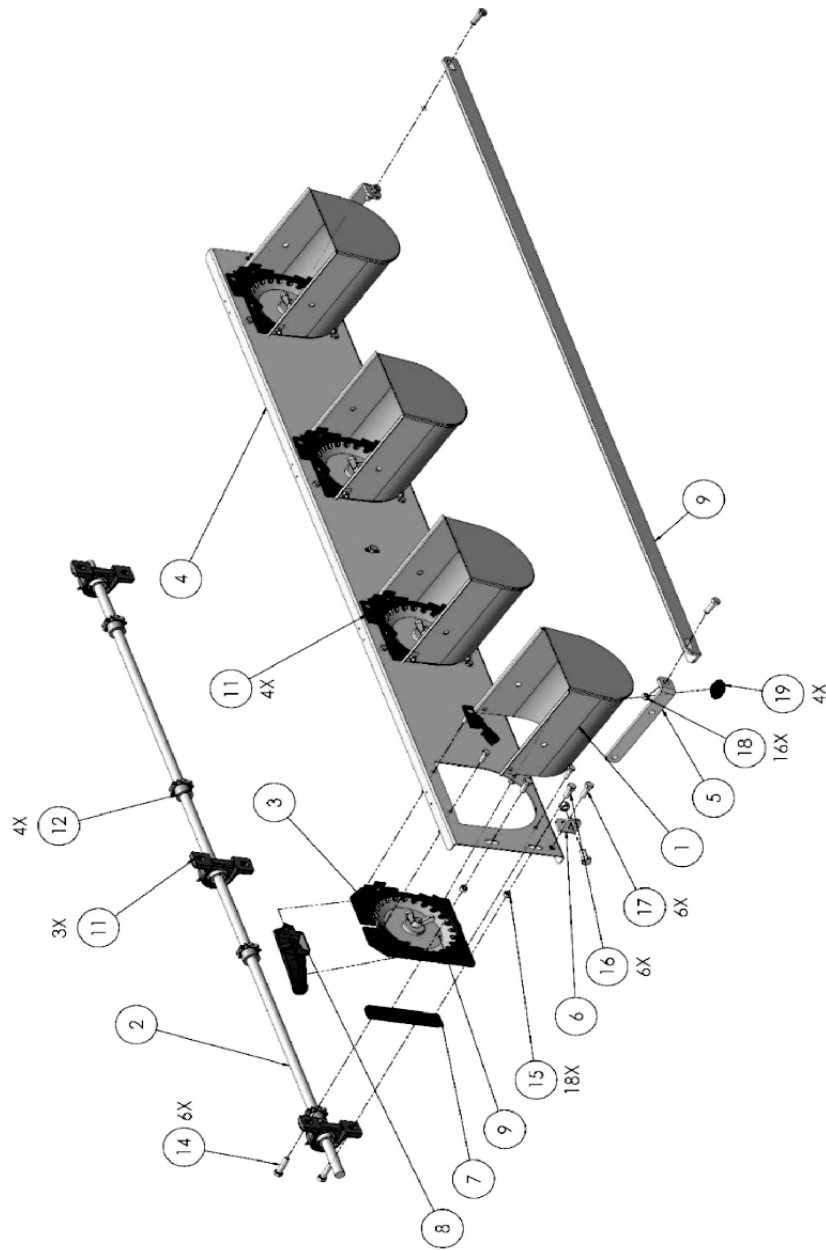


**FERTILIZER HOPPER-10650085**



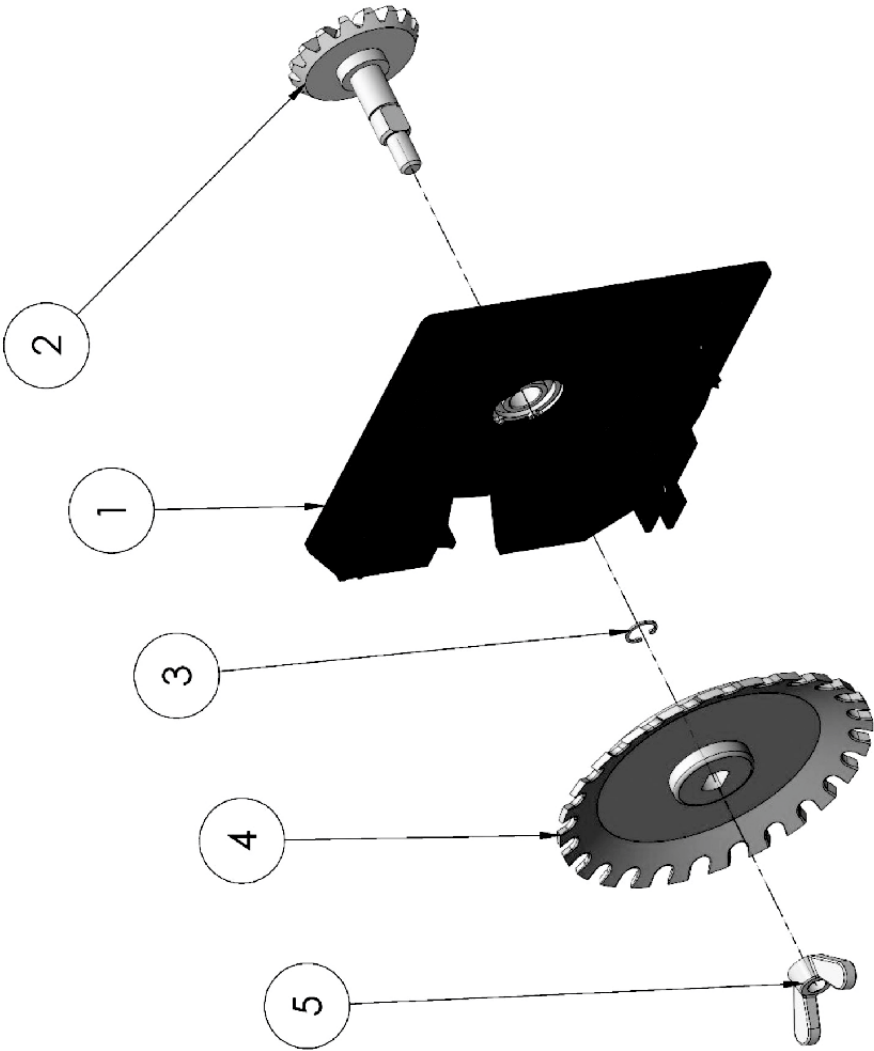
FERTILIZER HOPPER-10650085			
SR NO	ITEM NAME	PART CODE	QTY
1	HOPPER-FERTILIZER 4 ROW PLANTER WELDED	10650014	1
2	SHAFT-FERTILIZER 4 ROW PLANTER COMPLETE	10650015	1
3	ANGLE-FERTILIZER SHAFT SUPPORT	10650016	1
4	CLAMP-FERTILIZER FLAT	10650017	4
5	FLAT-FERTILIZER 4 ROW PLANTER COMPLETE	10650018	1
6	BRACKET-FERTILIZER CLOSED TYPE	10650019	1
7	BRACKET-FERTILIZER OPEN TYPE	10650020	1
8	BUSH-SQUARE FERTILIZER GULLI	10650021	1
9	FUNNEL-FERTILIZER BEND	10650022	4
10	HUB-FERTILIZER COMPLETE	10650023	1
11	SPROCKET 37 TEETH	10650008	1
12	NUT-M33 X 1.5	10280239	1
13	FLAT-SUPPORT FERTILIZER SHAFT	10650024	1
14	BOLT -M8 x 25 x 1.25P	10260785	12
15	NUT - M8 x 1.25P	10280247	12
16	DRAIN CI	10650025	1

**SEED CHANNEL ASSEMBLY COMPLETE-10650086**



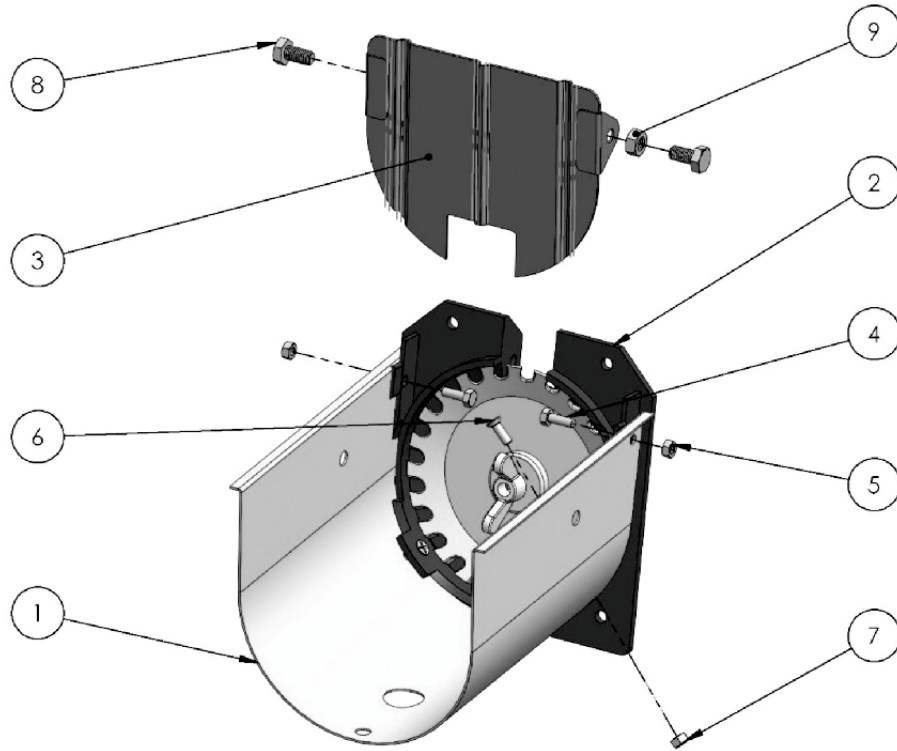
<b>SEED CHANNEL ASSEMBLY COMPLETE-10650086</b>			
<b>SR NO</b>	<b>ITEM NAME</b>	<b>PART CODE</b>	<b>QTY</b>
1	HOPPER-SEED HOPPER	10650026	1
2	SHAFT-SEED 4 ROW MULTICROP PLANTER	10650027	1
3	CHAMBER COMPLETE MULTICROP PLANTER W/O DISC	10650028	4
4	CHANNEL 4 ROW 71"	10650029	1
5	FLAT-MULTICROP PLANTER 'L' A	10650030	2
6	FLAT-MULTICROP PLANTER 'L' B	10650031	2
7	FLAT-Z PLANTER SHAFT MOUNT	10650032	3
8	FUNNEL-SEED MCP	10650033	4
9	DISC-L MARK	10650034	4
10	ANGLE -4 ROW 71"	10650035	1
11	BEARING-UCP 204	10050256	3
12	GEAR BEVEL SEED SHAFT	10650036	4
13	BRUSH ASSEMBLY	10650037	4
14	BOLT-M10X35	10260673	6
15	NUT-M10	10280002	18
16	BOLT-M10X20	10260390	6
17	BOLT-M10X25	10260361	6
18	NUT-M7	10280240	15
19	PLUG-RUBBER SENIOR	10650038	4

**DISC CHAMBER ASSEMBLY-10650088**



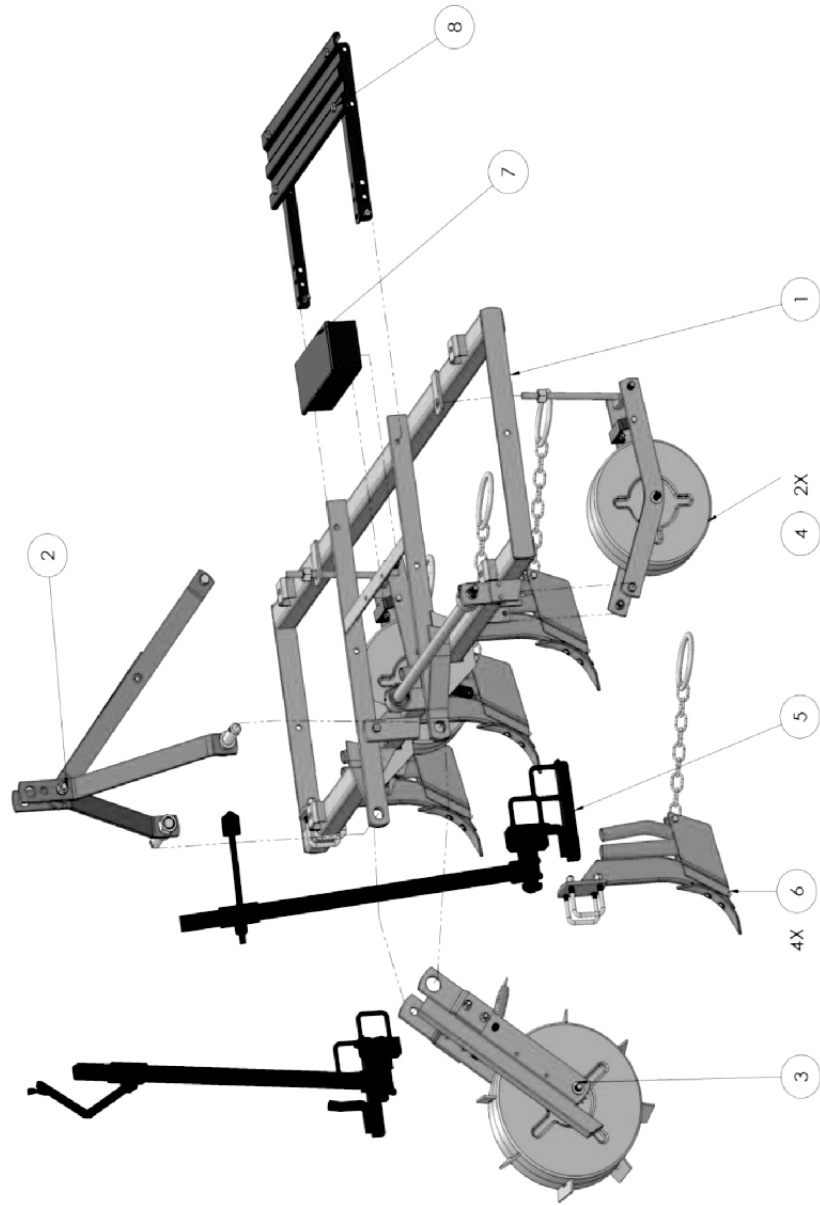
DISC CHAMBER ASSEMBLY-10650088			
SR NO	ITEM NAME	PART CODE	QTY
1	DISC CHAMBER	10650042	1
2	GEAR BEVEL WITH PIN	10650043	1
3	LOCK-16MM	10650044	1
4	SEED DISC	10650045	1
5	NUT-WING DISC LOCK	10280242	1

## SEED HOPPER-10650087



SEED HOPPER-10650087			
SR NO	ITEM NAME	PART CODE	QTY
1	SEED HOPPER MULTICROP PLANTER	10650039	1
2	CHAMBER MULTICROP PLANTER	10650040	1
3	SEED GATE	10650041	1
4	BOLT - M8X20	10260794	2
5	NUT-M8	10280247	2
6	SCREW-ALLEN CSK 2/8"X3/4"	10260786	2
7	NUT-ALLEN SCREW	10280241	2
8	BOLT-M10X20	10260390	2
9	NUT-M10	10280002	2

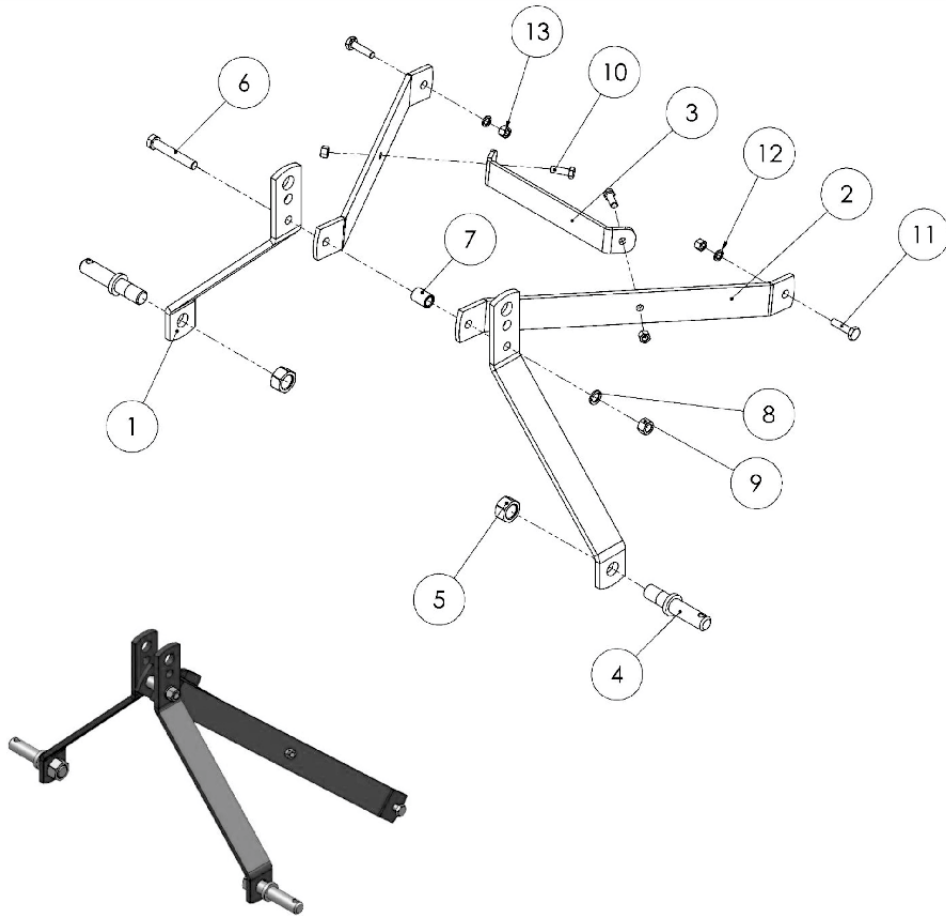
**BOTTOM LEVEL ASSEMBLY MCP 4 ROW-10650089**



**BOTTOM LEVEL ASSEMBLY MCP 4 ROW-10650089**

SR NO	ITEM NAME	PART CODE	QTY
1	FRAME 4 ROW PLANTER COMPLETE	10650046	1
2	LIFT ASSEMBLY-CAT 1 (HEAVY) COMPLETE	10650047	1
3	WHEEL-DRIVE COMPLETE	10650048	1
4	WHEEL-DEPTH CONTROL COMPLETE	10650049	2
5	"MARKER SET COMPLETE MULTI CROP PLANTER 4 ROWS "	10650050	1
6	TINE ASSEMBLY SFD COMPLETE BACK	10650051	4
7	TOOLBOX COMPLETE MULTICROP PLANTER	10650052	1
8	PLATFORM COMPLETE	10650053	1

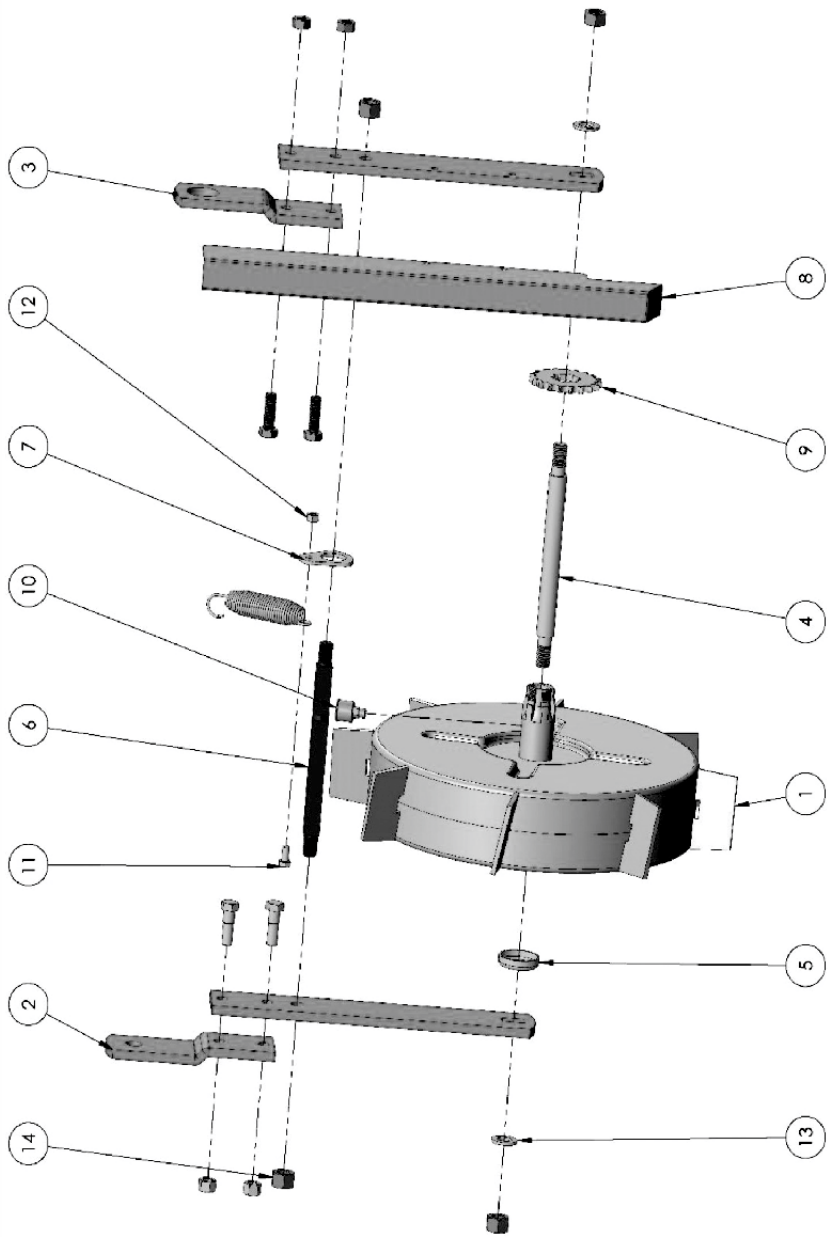
## LIFT CAT-1 COMPLETE-10650090



## LIFT CAT-1 COMPLETE-10650090

SR NO	ITEM NAME	PART CODE	QTY
1	FLAT LIFT FRONT 12 X 65 X 24" HEAVY	10650054	2
2	FLAT LIFT SLANT 26" 10 X 65 HEAVY	10650055	2
3	FLAT LIFT SUPPORT 16"	10650056	1
4	PIN-TILLER	10020236	2
5	NUT-TILLER PIN	10280243	2
6	BOLT-M16 X 100	10260403	1
7	BUSH-LIFT	10070124	1
8	WASHER-M16	10270265	1
9	NUT-M6	10280129	1
10	BOLT-M12 X 35	10260568	2
11	BOLT-M12 X 40	10260565	2
12	WASHER-M12	10270266	2
13	NUT-M12	10280160	4

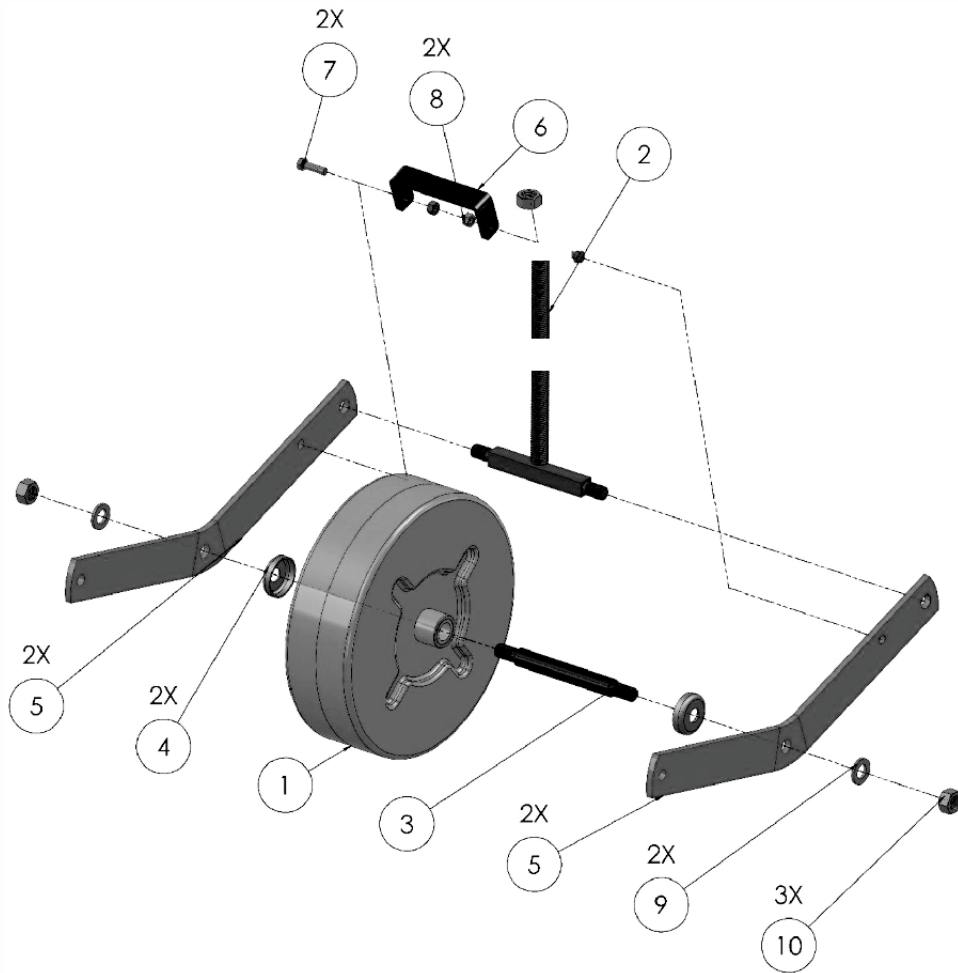
**DRIVE WHEEL ASSEMBLY COMPLETE-10650091**



**DRIVE WHEEL ASSEMBLY COMPLETE-10650091**

SR NO	ITEM NAME	PART CODE	QTY
1	WHEEL-DRIVE COMPLETE	10650057	1
2	FLAT-DRIVE WHEEL SMALL HOLE COMPLETE	10650058	1
3	FLAT-DRIVE WHEEL BIG HOLE COMPLETE	10650059	1
4	AXLE 9"	10110034	1
5	CAP-AXLE	10650060	1
6	STUD-SQUARE DRIVE WHEEL	10650061	1
7	FLAT SPRING DRIVE WHEEL	10650062	1
8	CHAIN COVER SMALL	10650063	1
9	SPROCKET 19 TEETH	10170039	1
10	CUP-GREASE	10650064	1
11	BOLT-M8X15	10260787	1
12	NUT-M8 x 1.25P	10280247	1
13	WASHER-M16	10270265	2
14	NUT-M16	10280244	4

## DEPTH CONTROL WHEEL ASSEMBLY COMPLETE-10650092



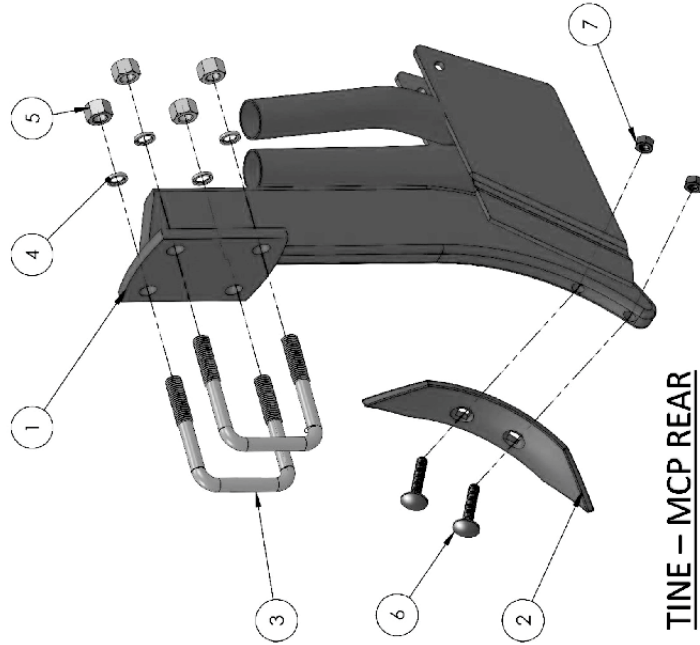
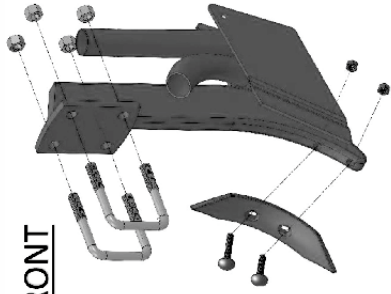
## DEPTH CONTROL WHEEL ASSEMBLY COMPLETE-10650092

SR NO	ITEM NAME	PART CODE	QTY
1	WHEEL SIDE COMPLETE	10650065	1
2	T-STUD COMPLETE	10650066	1
3	AXLE 7"	10110035	2
4	CAP-AXLE	10650060	2
5	FLAT-DEPTH CONTROL WHEEL	10650067	1
6	FLAT-MUD	10650068	1
7	HEX BOLT M8X30	10260651	2
8	NUT-M8 x 1.25P	10280247	2
9	WASHER-16MM	10270267	2
10	NUT-M16	10280244	2



**MULTI CROP ROW PLANTER TINE ASSEMBLY COMPLETE-10650093**

**TINE – MCP FRONT**

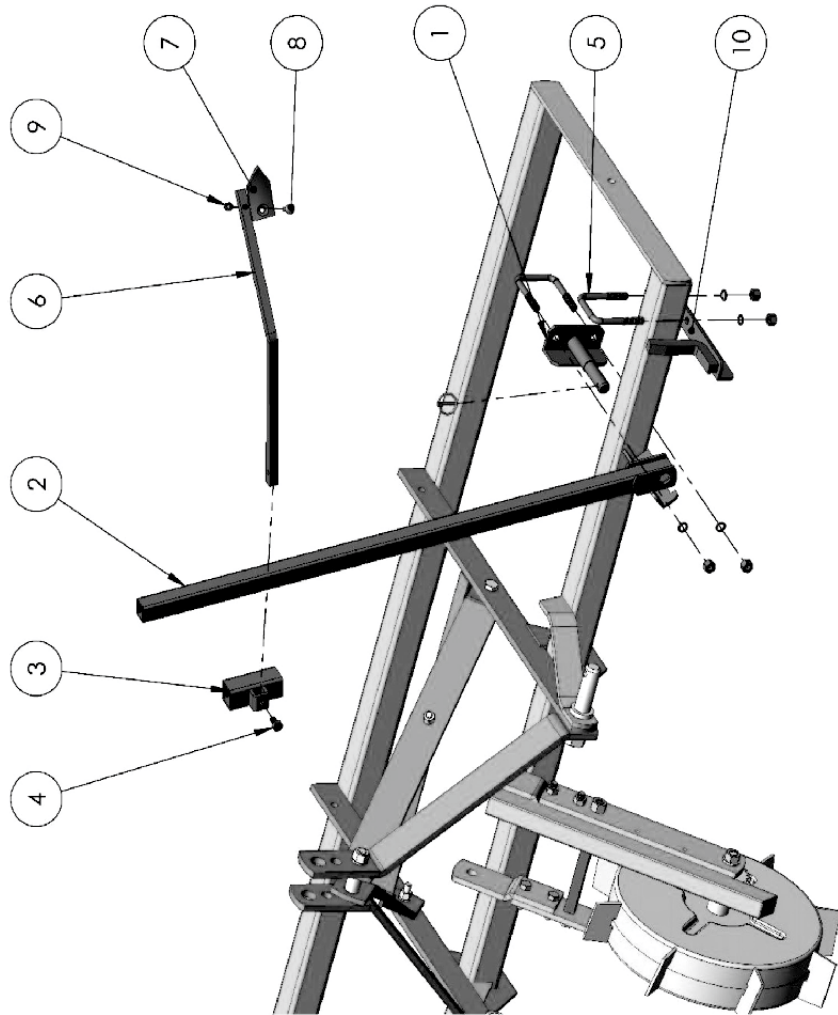


**TINE – MCP REAR**

**MULTICROP PLANTER TINE ASSEMBLY COMPLETE-10650093**

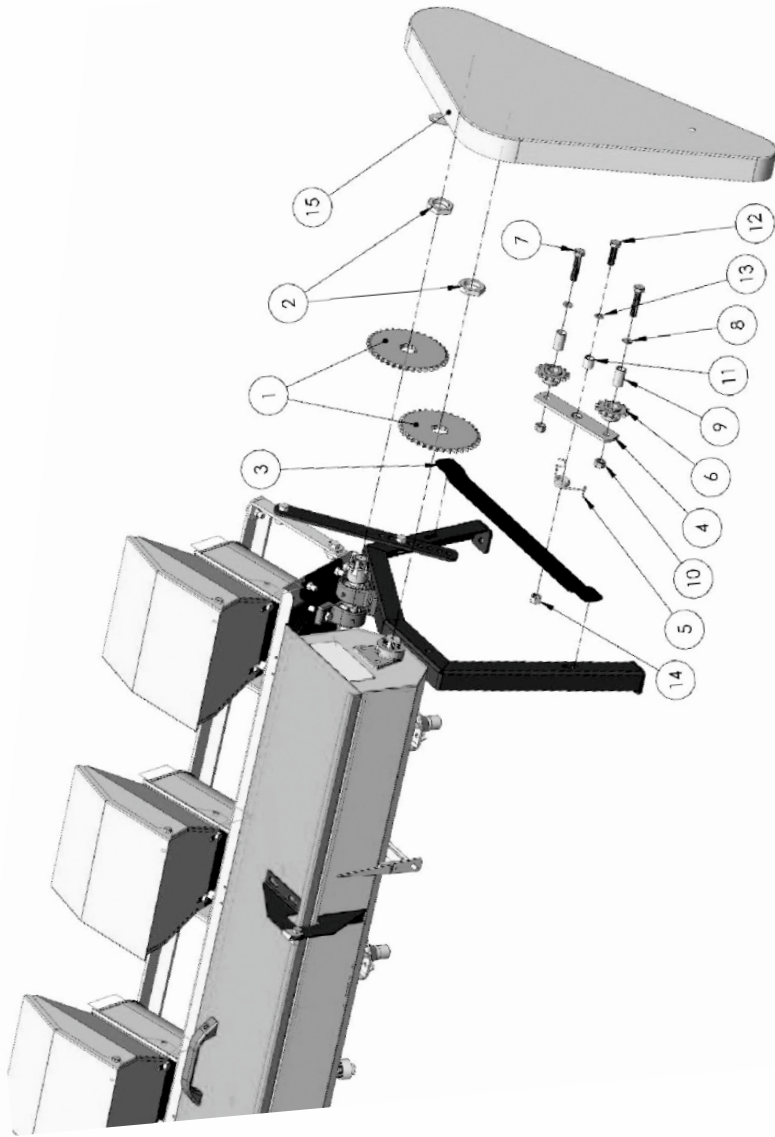
SR NO	ITEM NAME	PART CODE	QTY
1	TINE-SED FRONT/REAR	10650069	1
2	SHOVEL-SEED DRILL	10650070	1
3	CLAMP-U 14MM	10220072	2
4	SPRING WASHER -14MM	10270268	4
5	NUT-M14	10280245	4
6	CARRIGE BOLT M8X40	10260788	1
7	CARRIGE BOLT M8X50	10260789	1
8	NUT-M8 x 1.25P	10280247	2

**MARKER ASSEMBLY MCP 4 ROW-10650094**



<b>MARKER ASSEMBLY MCP 4 ROW-10650094</b>			
<b>SR NO</b>	<b>ITEM NAME</b>	<b>PART CODE</b>	<b>QTY</b>
1	MARKER PIN ASSEMBLY	10650071	1
2	PIPE-MARKER MULTICROP PLANTER 4 ROW	10650072	1
3	MARKER SLIDE COMPLETE	10650073	1
4	BOLT-M10	10260790	1
5	CLAMP-U 14MM ASSEMBLY	10220073	2
6	MARKER TINE COMPLETE	10650074	1
7	SHOVEL-MARKER TINE	10650075	1
8	CARRIAGE BOLT-M8	10260791	1
9	NUT-M8 x 1.25P	10280247	1
10	MARKER REST COMPLETE	10650076	1

**CHAIN TIGHT ASSEMBLY-10650095**



**CHAIN TIGHT ASSEMBLY-10650095**

SR NO	ITEM NAME	PART CODE	QTY
1	SPROCKET 37 TEETH	10650008	2
2	NUT M33X1.5	10280239	2
3	FLAT CHAIN TIGHT MULTICROP PLANTER LARGE	10650077	1
4	FLAT CHAIN TIGHT MULTICROP PLANTER SMALL	10650078	1
5	SPRING CHAIN IDLER	10650079	1
6	SPROCKET -14 PVC	10170040	2
7	BOLT-M16	10260792	2
8	WASHER-M16	10270269	2
9	BUSH CHAIN TIGHT IDLER BIG	10650080	2
10	NUT-M16	10280244	2
11	BUSH CHAIN TIGHT IDLER MEDIUM	10650081	1
12	BOLT-M14	10260793	1
13	WASHER-M14	10270270	1
14	NUT-M14	10280245	1
15	CHAIN COVER MCP	10650082	1

## DELIVERY CHECKLIST

Dealer Pre-Delivery (Please Tick)	Please Complete all Dealer information Below
<p><b>1. Dealer Pre-Delivery Checklist</b></p> <p>1. The customer or person responsible has been given the operator's manual.</p> <p>2. The customer undertakes to read the complete operator's manual and understands all aspects of the manual before operation of the machine.</p> <p>3. All safety, operational and maintenance information have been explained and demonstrated.</p> <p>4. All greasing and oil points, stickers, guarding and ID plate have been identified and physically pointed out.</p> <p>5. The customer agrees that it is his responsibility to read and carry out the safety, maintenance and operation as per this operator's manual.</p>	<p><b>Dealer Information</b></p> <p>Dealer's Name.....</p> <p>Address.....</p> <p>State..... Postcode.....</p> <p>Phone..... Fax.....</p> <p>Email.....</p> <p>Service Person.....</p> <p>I confirm that the pre-delivery service was performed on this machine.</p> <p>Signature.....</p> <p>Date.....</p> <p>Comments.....</p>
Customer Delivery (Please Tick)	Please Complete all Customer Information Below
<p><b>2. Customer Delivery Checklist</b></p> <p>1. The customer or person responsible has been given the operator's manual.</p> <p>2. The customer undertakes to read the complete operator's manual and understands all aspects of the manual before operation of the machine.</p> <p>3. All safety, operational and maintenance information have been explained and demonstrated.</p> <p>4. All greasing and oil points, stickers, guarding and ID plate have been identified and physically pointed out.</p> <p>5. The customer agrees that it is his responsibility to read and carry out the safety, maintenance and operation as per this operator's manual.</p>	<p><b>Customer Information</b></p> <p>Customer's Name.....</p> <p>Address.....</p> <p>State..... Postcode.....</p> <p>Phone..... Fax.....</p> <p>Email.....</p> <p>Delivery Person.....</p> <p>I confirm that all of the delivery checks were explained and performed.</p> <p>Signature.....</p> <p>Delivery Date.....</p> <p>Comments.....</p>

# FIELDKING

## WARRANTY CARD Customer Copy

CUSTOMER NAME Mr./ Mrs. :

ADDRESS :

MOBILE NO. :

Email :

NAME OF IMPLEMENT :

MODEL NO. :

YEAR OF Mfg. :

SERIAL NO. :

REGISTRATION NO. :

DATE OF PURCHASING :

NAME OF DEALER :

Customer's Signature

Dealer's Signature



**Beri Udyog Pvt. Ltd.**

**Corporate Office :** Plot No. 235-236 & 238-240, Sec-3, HSIIDC,  
Karnal- 132001 (Haryana), India ☎ +91-184-2221571/ 72/ 73

✉ marketing@fieldking.com, exports@fieldking.com, 🌐 www.fieldking.com

# FIELDKING

## WARRANTY CARD

Dealer Copy

CUSTOMER NAME Mr./ Mrs :

ADDRESS :

MOBILE NO. :

Email :

NAME OF IMPLEMENT :

MODEL NO. :

YEAR OF Mfg. :

SERIAL NO. :

REGISTRATION NO. :

DATE OF PURCHASING :

NAME OF DEALER :

Customer's Signature

Dealer's Signature



**Beri Udyog Pvt. Ltd.**

**Corporate Office :** Plot No. 235-236 & 238-240, Sec-3, HSIIDC,  
Karnal- 132001 (Haryana), India

+91-184-2221571/ 72/ 73  
✉ marketing@fieldking.com, exports@fieldking.com, 🌐 www.fieldking.com

# FIELDKING

## WARRANTY CARD Company Copy

CUSTOMER NAME Mr./ Mrs :

ADDRESS :

MOBILE NO. :

Email :

NAME OF IMPLEMENT :

MODEL NO. :

YEAR OF Mfg. :

SERIAL NO. :

REGISTRATION NO. :

DATE OF PURCHASING :

NAME OF DEALER :

Customer's Signature

Dealer's Signature



**Beri Udyog Pvt. Ltd.**

**Corporate Office :** Plot No. 235-236 & 238-240, Sec-3, HSIIDC,  
Karnal- 132001 (Haryana), India

+91-184-2221571/ 72/ 73  
✉ marketing@fieldking.com, exports@fieldking.com, 🌐 www.fieldking.com