

FIELDKING

Power Harrow



➤ [Operator Manual](#) ➤ [Service Manual](#) ➤ [Part Catalogue](#)

CONGRATULATIONS!

You have invested in one of the best implements of its type in the market today.

The care you give your “FIELDKING” implement will greatly determine your satisfaction with its performance and its service life. A careful study of this manual will give you a thorough understanding of your new implement before operating.

If your manual is lost or destroyed, “FIELDKING” will be glad to provide you a new copy. Visit to nearest dealership & get a copy. Most of our manuals can also be downloaded from our website at www.fieldking.com.

As an authorized “FIELDKING” dealer, we stock genuine “FIELDKING” parts which are manufactured with the same precision and skill as our original equipment. Our trained service persons are well informed on methods required to service “FIELDKING” equipments and are ready to help you.

Should you require additional information or assistance, please contact us.

YOUR AUTHORIZED
FIELDKING DEALER

BECAUSE “FIELDKING” MAINTAINS AN ONGOING PROGRAMME OF PRODUCT IMPROVEMENT, WE RESERVE THE RIGHT TO MAKE IMPROVEMENTS IN DESIGN OR CHANGE IN SPECIFICATION WITHOUT INCURRING ANY OBLIGATION TO INSTALL THEM ON UNITS PREVIOUSLY SOLD. BECAUSE OF THE POSSIBILITY THAT SOME PHOTOGRAPHS IN THIS MANUAL WERE TAKEN OF PROTOTYPE MODELS, PRODUCTION MODELS MAY VARY IN SOME DETAIL. IN ADDITION, SOME PHOTOGRAPHS MAY SHOW SHIELDS REMOVED FOR THE PURPOSE OF CLARITY. NEVER OPERATE THIS IMPLEMENT WITHOUT ALL SHIELDS IN PLACE.

TO THE PURCHASER

This manual contains valuable information about your new “FIELDKING” power harrow. It has been carefully prepared to give you helpful suggestions for operating, adjusting, servicing and ordering spare parts.

Keep this manual in a convenient place for quick and easy reference. Study it carefully. You have purchased a dependable and sturdy power harrow but only by proper care and operation you can expect to receive the service and long life designed and built into it.

Sometime in the future your power harrow may need new parts to replace which are worn out or broken. If so, go to your dealer and provide him equipment’s detail like model and part number.

CUSTOMER INFORMATION

Name _____

Purchased From _____

Date of Purchase _____

Model No. _____

Serial No. _____

PURCHASER / OPERATOR'S RESPONSIBILITY

1. Read and understand the information contained in this manual.
2. Operate, lubricate, assemble and maintain the equipment in accordance with all instructions and safety procedures in this manual.
3. Inspect the equipment and replace or repair any parts that are damaged or worn out which under continued operation would cause damage, wear to other parts, or cause a safety hazard.
4. Return the equipment or parts to the authorized "FIELDKING" dealer, from where it was purchased, for service or replacement of defective parts that are covered by warranty. (The "FIELDKING" Factory may inspect equipment or parts before warranty claims are honored.)
5. All costs incurred by the dealer for traveling to or transporting the equipment for warranty inspection and claims will be borne by the customer.

INDEX

- 1 **Preface**
- 2 **Description of the machine**
- 3 **Start-up and operation of the machine**
 - Before using for the first time
 - Attachment to the tractor
 - Working with the rotary harrow
- 4 **Maintenance, care and transport**
 - Changing and regrinding tines
- 5 **Safety instructions**
- 6 **Technical data and connections**
- 7 **Spare parts list**

1. Preface

Dear customer

The power harrow made by FIELDKING is an ideal implement for tilling the soil and preparing seed-beds on farms and in vineyards or orchards, as well as for row crops and speciality crops.

Please read these operating instructions through carefully before using the power harrow and strictly follow all the instructions so that the rotary harrow can be used safely and correctly, for its intended purpose.

The power harrow may only be used by persons who have the required professional know-how and who have also read and understood these operating instructions.

Please ensure that you know how to handle and operate the implement before using it!

General information:

- The power harrow may only be used for the specified purpose: mechanical soil tillage and seed-bed preparation.
- The power harrow may only be started and stopped from the tractor driver's seat. No-one may remain within a distance of less than 10 meters around the rotary harrow during its operation.
- The power harrow may only be operated in full daylight.
- The power harrow may only be operated when all guards and safety mechanisms are installed and fully functional.
- Malfunctions impairing safety must immediately be remedied by specialist personnel.
- The traffic regulations must be observed when driving on public roads.
- The P.T.O shaft must be disengaged from the tractor during all maintenance and repair work on the power harrow in order to prevent inadvertent start-up.
- Repairs should only be undertaken by specialist repair shops or the "FIELDKING" customer service centre. The power harrow should never be modified without authorization.
- The power harrow may only be operated with a P.T.O shaft with friction clutch.

2. Description of the machine:

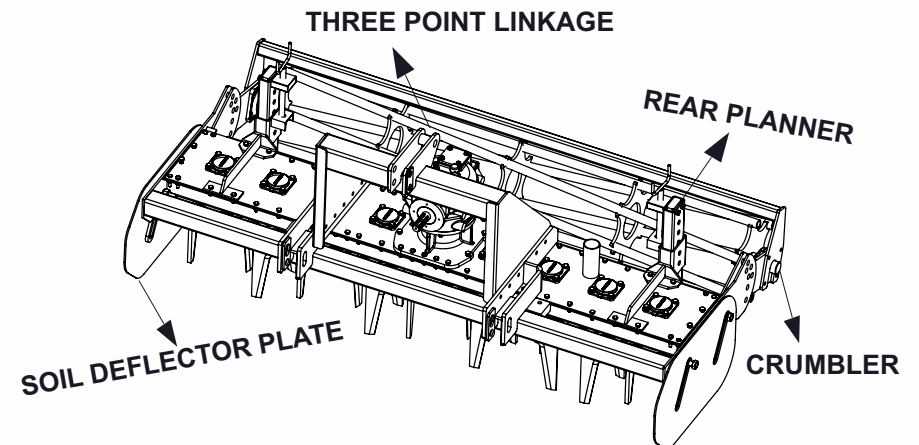
The power harrow must be used for mechanical soil tillage and seed-bed preparation on farms and in vineyards and orchards, as well as for row crops and speciality crops.

Moisture remains in the soil and the water balance of the soil is maintained since the soil is not turned up as it is tilled. The vertically rotating cutters also prevent compaction of the soil, thus resulting in optimum preparation of the seed-beds.

The power harrow is mounted on the tractor by means of a three-point linkage. The gear mechanism is driven via a P.T.O shaft and drives the cutters in the housing via gear wheels.

The working depth is set by means of a hand spindle in combination with the support roller/crumbler. The friction clutch mounted on the cardan shaft protects both the harrow and the tractor from damage if overloaded. An additional machine, such as a seeder, can be connected to the rotary harrow via a further three-point suspension on the basic unit. In this way, the seed-bed can be prepared and the seed sown in a single pass.

The working depth should be adjusted in line with the prevailing ground conditions in order to obtain the best possible results. Large objects should be removed from the ground beforehand so that the soil can be tilled correctly and to prevent premature wear on the tines.



The housing accommodates the various components making up the power harrow. The support crumbler, three-point frame, and tine units are bolted onto the housing.

The three-point frame is made of tubular structure and bolted onto the housing.

Each tine unit comprises a rotor shaft, two boron steel blade, bearing housing, gear, bearing and connecting elements. The blades are mounted underneath the rotor shaft and serve to loosen the soil. They are secured by means of special bushings, washers, bolts and lock nuts.

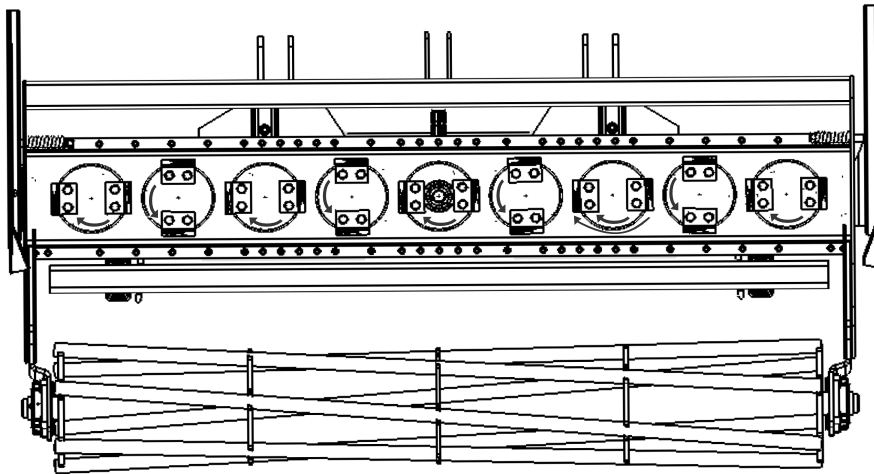


FIG. 2

3. Start-up and operation of the machine

* Before using the machine for the first time

- Read through the operating instructions for the power harrow and additional attachments and ensure that you are fully familiar with the mode of operation of all units.
- Check that the length of the p.t.o shaft fits your tractor. The p.t.o shaft should include an appropriate protective mechanism!

* Attachment to the tractor

- Examine tools (tines) and tine carriers for signs of wear and ensure they are secured correctly.
- Check that the support crumbler and three-point frame are correctly secured to the housing.
- Now connect the power harrow to the tractor by means of the three-point suspension. Secure the bolts of the upper and lower links with spring pins. Park the tractor on level ground and adjust the upper link so that the power harrow is horizontal.
- Now adjust the length of the cardan shaft to match your tractor. For this purpose, hold the two halves of the cardan shaft side-by-side in the shortest lift-out position and mark it accordingly. Shorten the inner and outer protective tube by equal amounts. Then shorten the inner and outer sliding profile by the same amount as the protective tube. Finally round off the cut edges and carefully remove all chips. Grease the sliding profiles.
- Before engaging the cardan shaft, carefully clean and grease the p.t.o. shaft of the tractor and power harrow. Then slide the cardan shaft over the p.t.o. shaft until the locking pin engages completely. The friction clutch of the cardan shaft must be mounted at the machine end.
- The working depth is now adjusted with the aid of the hand spindle in accordance with ground condition on a firm and level substrate or by lifting the unit completely.

The power harrow with fitted tools and attachments is now ready for use.

* Working with the rotary harrow

- The tractor p.t.o. shaft must not be switched on until it is certain that the shaft will rotate at not more than 540 rpm at maximum engine speed.
- The p.t.o. drive must not be engaged when the tractor drives running at full load.
- The power harrow may only be started and stopped from the tractor driver's seat.
- The power harrow may only be switched on when there is no-one within its range of operation and hazard area (radius of 10 m from the rotary harrow) due to the risk of objects, such as stones, being hurled away from the machine. The duly prepared machine must be lowered to the working position before it is switched on. The power harrow can then be switched on.
- The machine must be lowered slowly in order to avoid damage to the tools and attachments.
- During the work, the machine must be lowered to the working depth and left with the set control hydraulics. The horizontal position of the power harrow can be corrected by means of the upper link.
- The areas to be tilled should be inspected for visible large obstacles before starting so that they can be removed from the harrow's range and thus prevent damage to the tines and drive elements.

- If a reversing manoeuvre is required at the end of the row being tilled, the tractor p.t.o. must be switched off and the rotary harrow allowed to come to a complete standstill before it is lifted out of the ground for the manoeuvre (risk of clods of earth being hurled off by the tines).
- Dust clouds may form when operating the power harrow at higher speeds on dry ground. Light respiratory protection should therefore be worn when using a tractor without closed driver's cab.

4. Maintenance, care and transport:

The cardan shaft must always be disengaged and the ignition key removed before starting any maintenance and repair work on the rotary harrow!

Maintenance or repair work must never be performed underneath the power harrow without appropriate supports. Precautions must always be taken to prevent the machine from dropping inadvertently, for instance by using hoisting gear.

The power harrow should always be placed on firm, level ground.

The power harrow type FIELDKING POWER HARROW is designed and built to require as little maintenance and care as possible.

However, the following points should be observed nevertheless:

- All nuts, bolts and screws must be examined after the first five hours of operation and then always before using the machine in order to ensure that they are secure. They must be retightened if necessary.
- The cardan shaft must be lubricated with sufficient sulphur-free grease every eight hours of operation so that it can always be extended and retracted without difficulty. The bearing points on the cutter unit, the spindle for setting the working depth and the roller mount must be lubricated every 30 hours of operation.
- The oil must be checked every 20 hours of operation.
- Gear oil must be changed after approx. 200 hours of operation. A container must be placed under the machine to collect the escaping oil and prevent contamination of the ground. Waste oil must be disposed of in accordance with the regulations.
- The power harrow should be stored in a dry place, on firm, level ground. It should be secured with chocks or similar objects to prevent inadvertent tilting.
- The machine must be thoroughly cleaned before prolonged storage. Those parts which are in contact with the ground during operation should be sprayed with corrosion inhibitor.
- Particular attention must be paid to the condition of the tines in order to ensure maximum occupational safety and high-quality results. Before starting work, the tine must therefore be examined to ensure they are correctly secured and wear down evenly. Bent tines must be replaced immediately.
- Vibrations in the power harrow are usually due to imbalances in the tine unit and may damage the machine. Switch off the power harrow and the tractor if the vibrations increase significantly during operation or if the machine's running noise changes suddenly. The cause must be located and remedied before resuming work.

- When cleaning the machine with a high-pressure cleaner, care must be taken not to direct the high-pressure jet against bearings and seals, as this can result in malfunctions and premature failure of the machine.
- The screw connections between tines and tine flange / guard plate must be checked regularly. Always fit new lock nuts and new washers whenever the screw connections have been removed. The condition and degree of wear on the tines and tine pick-up must be checked regularly.
- When transporting the machine, care must be taken to ensure that there is no one and nothing in the immediate vicinity when sluing outwards with the tractor.
- The power harrow should only be repaired by a specialist repair shop or the FIELDKING customer service centre.

Changing and regrinding tines:

Tines should only be reground and changed by your dealer, since considerable hazards can arise if they are fitted incorrectly.

Removal of the tines:

- First switch off the tractor and remove the ignition key.
- Disengage the cardan shaft and then the power harrow from the tractor.

Remember to support it so that it cannot tip over inadvertently.

- Remove the fastening bolt and nut with a suitable wrench.
- Important: For safety reasons, new self-locking nuts and new washers must always be used whenever the tines are changed.

Ensure that the tines are fitted correctly in the direction of rotation.

Installation of the tines:

- Fit the tines in the correct order (see Fig. 2).
- Fit the fastening bolt, washers and nut.
- Tighten the self-locking nut twice.

Regrinding the tines:

If the tines have to be reground, care must be taken to ensure that each pair of tines in the tine unit is reground. This prevents the tine unit concerned becoming imbalanced.

Use the transport aids or three-point hitch provided on the housing to transport and handle the power harrow.





5. Safety instructions:

- The POWER HARROW may only be used when all safety mechanisms are in place and fully functional.
- All faults capable of impairing safety must immediately be remedied by specialist personnel.
- The operating instructions of any additional attachments installed must be read through carefully and observed.

- Never climb onto the tractor or leave it unattended when the p.t.o. shaft is running.
- Never allow anyone who is not familiar with the safety and operating instructions to use the machine.
- Remove all visible large objects which may be picked up and hurled aside by the power harrow. Particular attention must be paid to loose wires on the ground.
- Adjust your driving speed in line with the ground conditions and prevailing circumstances.
- No one may remain within 10 meters of the power harrow during operation of the machine. High risk of injury due to moving machine parts and objects being hurled away from the machine, such as stones, etc.
- Never climb or reach in between the power harrow and the tractor with your arms or legs during operation of the machine – high risk of injury! (This is only permitted when the machine has been lowered to the ground and the tractor switched off.)
- The machine should only be operated in full daylight. Traffic regulations must be observed when driving on public roads. Adequate illumination must be ensured when driving in twilight or darkness (A detachable set of lights is recommended.)
- Never climb or reach in between the support roller and cutter unit with your arms or legs- high risk of injury.
- Always wear tightly fitting clothes so that these cannot be caught between rotating parts of the machine.
- Safety stickers must be kept clean and observed!
- Never open or remove the guard elements during operation. Worn or defective parts must immediately be replaced by new parts.
- The cutter unit must never be operated when the rotary harrow is lifted off the ground.
- Driving a tractor on steep slopes can be dangerous. If work on steep slopes is unavoidable, great care should be exercised. Do not take bends too tightly.
- No one may ever ride on the machine either during operations or while it is being transported, not even over short distances.
- Always examine the power harrow for signs of damage following a collision with any objects. Such damage must always be repaired before resuming work.
- Maintenance and repair work may only be carried out when the cardan shaft and machine have been disengaged from the tractor.
- Never crawl under a power harrow which is still connected to the tractor, as the machine may be lowered at any time – high risk of injury.
- When traveling round bends, take account of the larger width / length (turning circle) and considerable weight of the power harrow.
- Ensure that the cardan shaft halves and protective tubes overlap as prescribed, both in the transport position and in the working position. Read the operating instructions for the cardan shaft in this context.

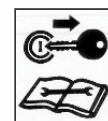
- The cardan shaft should only be engaged and disengaged when the tractor engine is switched off and the ignition key has been removed.
- The power harrow may only be operated with the cardan shaft with friction clutch supplied by FIELDKING. FIELDKING cannot accept any liability for damage or losses due to use of a different cardan shaft.

Technical data and connections

DESCRIPTION	FKRPH-5	FKRPH-6	FKRPH-7	FKRPH-9	FKRPH-11
Cutting Width (m) 	1.2	1.45	1.7	2.1	2.6
PTO RPM / Rotor RPM 	Single Speed (540 / 302)				
No. of Rotor	5	6	7	9	11
No. of Blades	10	12	14	18	22
Blades Thickness (mm)	14				
Gear Box Overload Protection	Shear Bolt				
Weight (Kg. Approx.) 	450	550	650	800	950
Tractor Power (HP) 	40-45	45-60	55-75	75-100	100-125



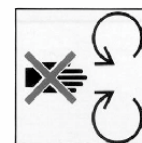
Warning: Beware of danger!



Warning: Read operating instructions before use.



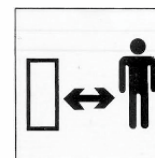
Warning: Never reach under the protective cover with hands or feet.



Warning: Beware of being trapped!

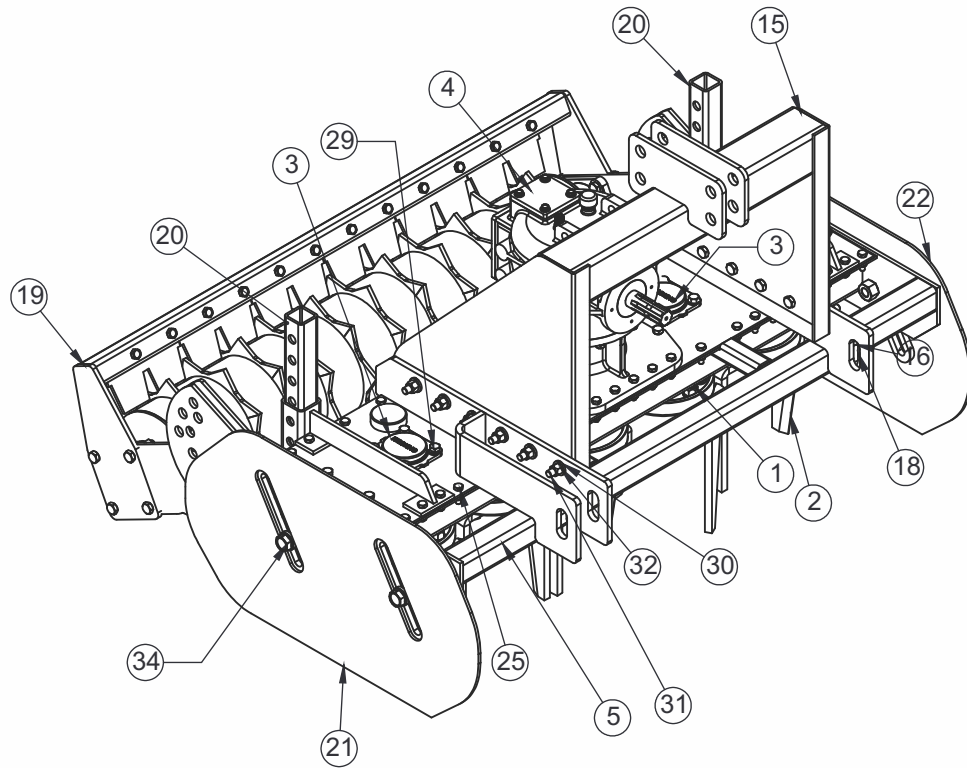


Warning: Beware of flying objects!



Warning: Keep a safe distance!

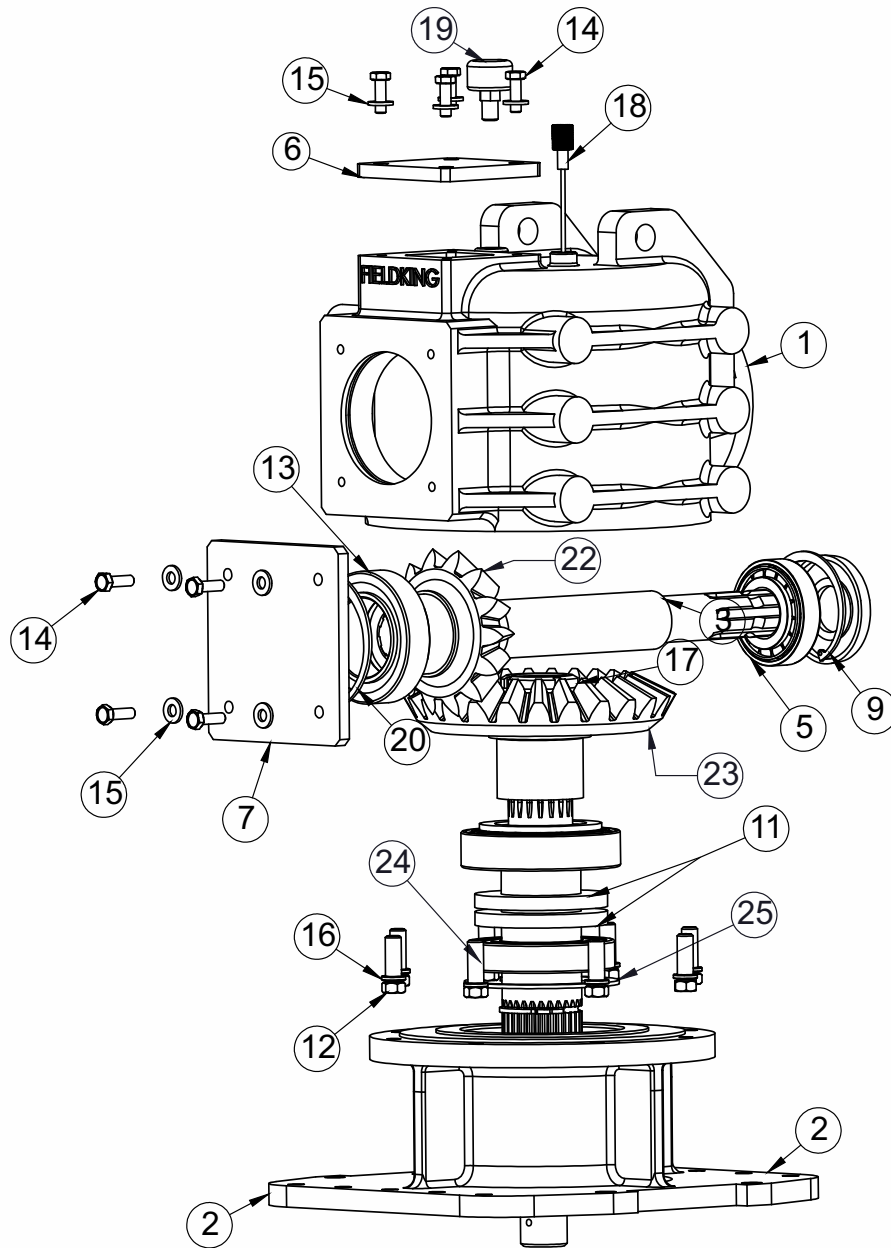
Power Harrow - 5 & 6 Rotor



Power Harrow - 5 & 6 Rotor

SR. NO.	DESCRIPTION	5 ROTOR		6 ROTOR	
		PART NO	QTY.	PART NO	QTY.
1	ANTI CLOCKWISE GEAR ROTOR SHAFT ASSEMBLY	79150001	2	79150001	3
2	CLOCKWISE GEAR ROTOR SHAFT ASSEMBLY	79150004	2	79150004	3
3	POWER HARROW CAP	10180035	5	10180035	5
4	POWER HARROW GEAR BOX ASSEMBLY.	79180001	1	79180001	1
5	POWER HARROW FRAME ASSEMBLY-5	79111016	1	79111020	1
6	BLADE FLANGE(POWER HARROW)	79110016	1	79110016	1
7	POWER HARROW BLADES(RIGHT)	10300296	5	10300296	6
8	BEARING 6307	10050090	4	10050090	5
9	PH-CUP LOWER	79150003	5	79150003	6
10	SPUR GEAR-28(POWER HARROW)	10250060	1	10250060	1
11	SOIL DEFLECTOR PLATE ASSEMBLY (L)	79170009	1	79170009	1
12	SPRING WASHER 12MM	10270003	24	10270003	24
13	HEX HEAD BOLT 16X50X2MM (8.8 GRADE)	10260358	1	10260358	1
14	CHUCK NUT 36X1.5P (LEFT HAND THREAD)	10280111	1	10280111	1
15	PH-POWER HARROW LINKAGE ASSEMBLY(LIGHT WEIGHT)	79100018	1	79100018	1
16	PH-CLOSER SHEET ASSEMBLY-5	79140007	1	79140011	1
18	U-CLAMP 100X90X12MM	10220014	1	10220014	4
19	POWER HARROW PACKER ROLLER ASSEMBLY-5	79190015	1	79190028	1
20	REAR PLANNER BAR ASSEMBLY.	79160001	1	79160033	1
21	SOIL DEFLECTOR PLATE ASSEMBLY N(L)	79170012	2	79170012	1
22	SOIL DEFLECTOR PLATE ASSEMBLY N(R)	79170011	1	79170011	1
24	LUBRICATING VALVE	10300353	1	10300353	1
25	HEX HEAD BOLT 10X35X1.5 MM (8.8 GRADE) (28MM THREAD)	10260353	32	10260353	34
26	SPRING WASHER 10MM	10270002	42	10270002	44
27	NYLOCK NUT M10X1.5MM	10280002	42	10280002	44
28	HEX HEAD BOLT M10X45X1.5MM (8.8 GRADE)	10260005	10	10260005	10
29	HEX HEAD BOLT M12X35X1.75MM (8.8 GRADE) (HALF THREAD)	10260006	24	10260006	24
30	SPRING WASHER 14MM	10270004	12	10270004	12
31	HEX HEAD BOLT 14X50X2 MM(8.8) GRADE	10260386	12	10260386	12
32	NYLOCK NUT M14X2 (P)	10280090	12	10280090	12
33	CHUCK NUT M45X1.5P(WITH NYLOCK)	10280109	8	10280109	8
34	HEX HEAD BOLT M20X85MM	10260119	4	10260119	4

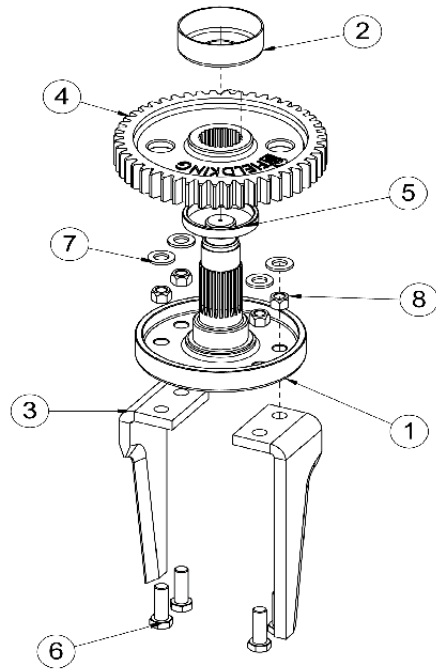
PH-GEAR BOX ASSEMBLY



PH-GEAR BOX ASSEMBLY

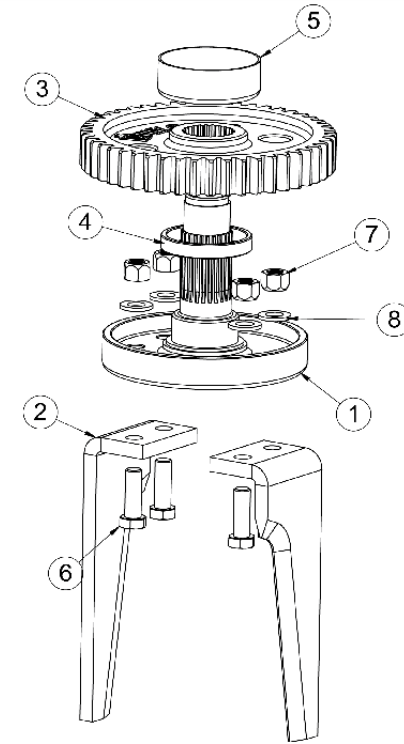
SR.NO.	DESCRIPTION	PART NO	QTY.
1	PH-GEAR BOX HOUSING	01050026	1
2	PH-GEAR BOX FLANGE (FOUNDATION)	01050025	1
3	INPUT SHAFT (POWER HARROW)	10290076	1
4	OUTPUT SHAFT POWER HARROW	10290075	1
5	BEARING 30307	10050142	1
6	GEAR BOX UPPER PLATE(100X100X10MM)	79180002	1
7	PH-SIDE PLATE	79180003	1
8	OIL SEAL 80X35X10	10010062	1
9	INTERNAL CIRCLIP B80 , 2.5 MM. THICK	10390005	1
10	EXTERNAL CIRCLIP A55, 2MM. THICK	10390001	1
11	OIL SEAL 100X60X10	10010096	2
12	HEX HEAD BOLT 10X35X1.5 MM	10260053	8
13	BEARING 33112	10050088	1
14	HEX HEAD BOLT M8X25X1.25MM (8.8 GRADE) (17MM THREAD)	10260360	8
15	SPRING WASHER 8MM	10270001	8
16	SPRING WASHER 10MM	10270002	8
17	CHUCK NUT 40X1.5P(LEFT HAND THREAD)	10280110	1
18	DIP STICK	10300001	1
19	BREATHER VALVE	10190001	1
20	INTERNAL CIRCLIP B100 4MM THIK	10390031	1
21	BEARING 32213	10050012	1
22	PINION	10250050	1
23	GEAR		1
24	BEARING 6212-2RS1/W64	10050157	1
25	CIRCLIP 110MM	10390008	1

ANTICLOCKWISE GEAR ROTOR ASSEMBLY

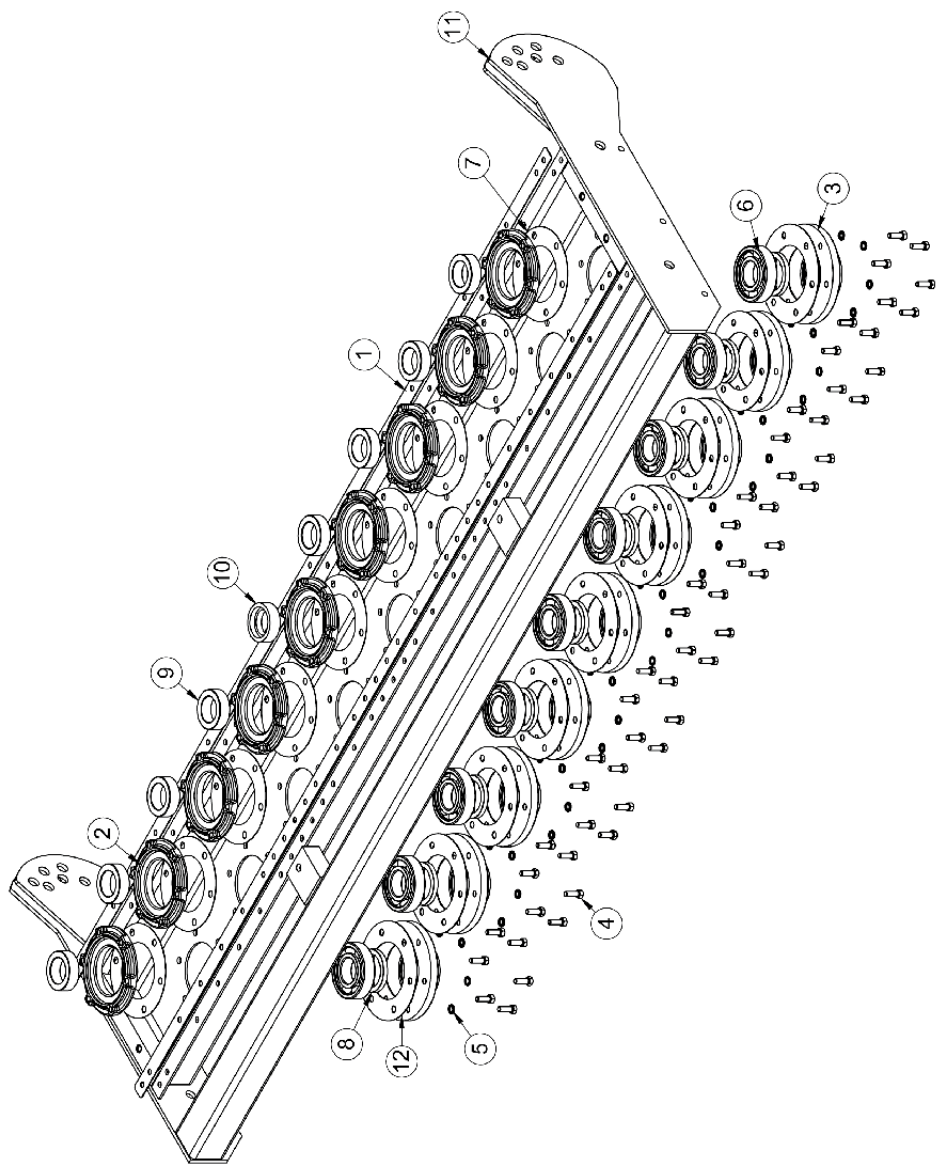


ANTICLOCKWISE GEAR ROTOR ASSEMBLY			
SR.NO	DESCRIPTION	PART NO	QTY.
1	GEAR ROTOR SHAFT(POWER HARROW)	10290077	1
2	PH-CUP UPPER	79150002	1
3	POWER HARROW BLADES(LEFT)	10300266	2
4	SPUR GEAR -24 (POWER HARROW)	10250061	1
5	.PH-CUP LOWER	79150003	1
6	HEX HEAD BOLT	10260358	4
7	SPRING WASHER	10270005	4
8	NYLOCK NUT	10280005	4

CLOCKWISE GEAR ROTOR SHAFT ASSEMBLY



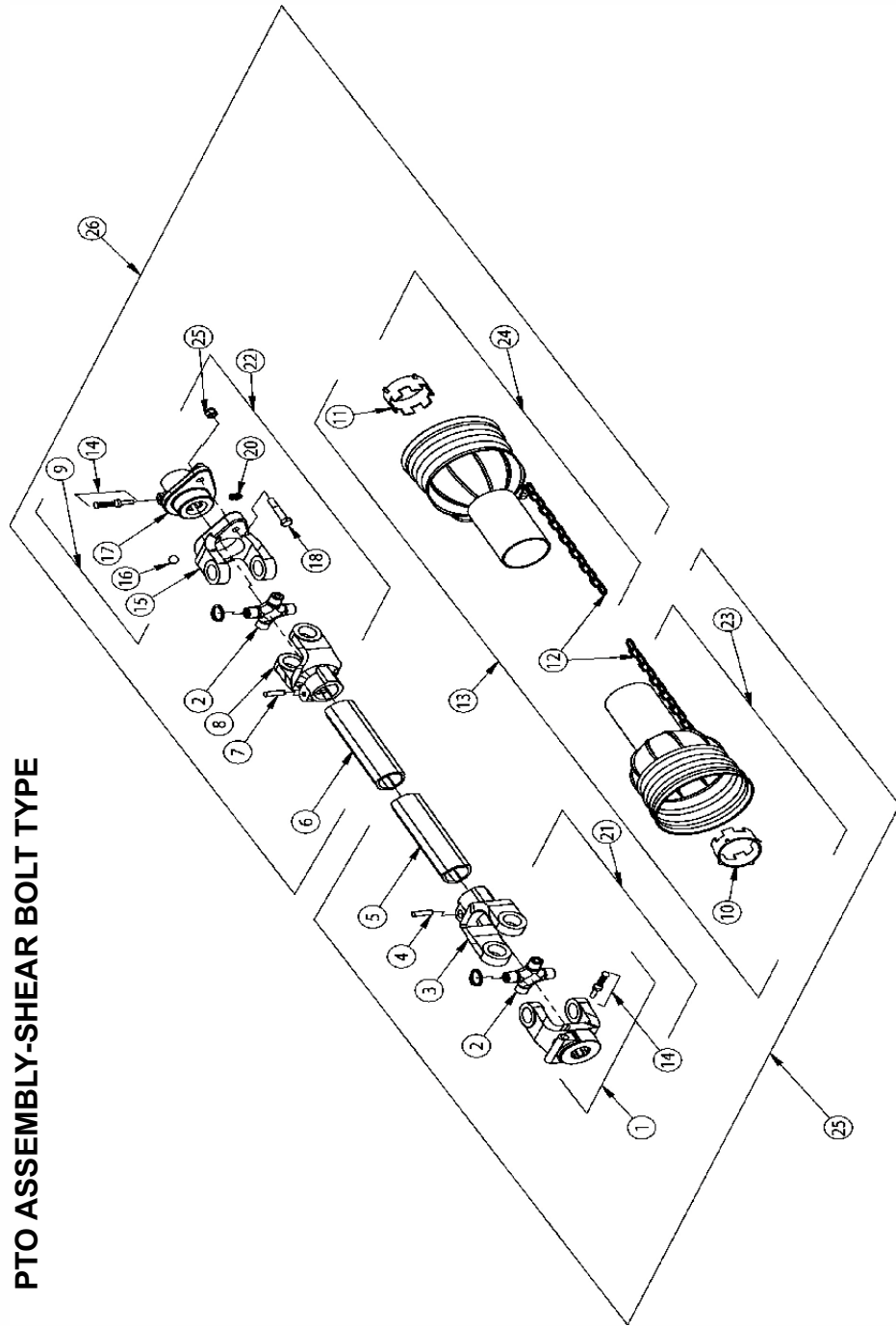
CLOCKWISE GEAR ROTOR SHAFT ASSEMBLY			
SR. NO.	DESCRIPTION	PART NO.	QTY.
1	GEAR ROTOR SHAFT(POWER HARROW)	10290077	1
2	POWER HARROW BLADES(RIGHT)	10300296	2
3	SPUR GEAR -24 (POWER HARROW)	10250061	1
4	.PH-CUP LOWER	79150003	1
5	PH-CUP UPPER	79150002	1
6	HEX HEAD BOLT	10260358	4
7	NYLOCK NUT	10270005	4
8	SPRING WASHER	10280005	4



POWER HARROW FRAME ASSEMBLY

SR.NO	DESCRIPTION	PART NO.				QTY.	
		7-ROTOR	9-ROTOR	11-ROTOR	7-ROTOR	9-ROTOR	11-ROTOR
1	GASKET	78710003	10040088	79110010		2	
2	PH-HUB FLANGE UPPER		10090051		7	9	11
3	POWER HARROW HUB		10090050		7	9	11
4	HEX HEAD BOLT		10260396		42	54	66
5	SPRING WASHER		10270002		42	54	66
6	BEARING 6310		10050053		7	9	11
7	GASKET 185X110X1.5		10040087		7	9	11
8	OIL SEAL 65X85X10		10010095		7	9	11
9	PH-ROTOR BUSH(75 ODX55 IDX24L)		79110005		6	8	10
10	PH-MAIN BUSH		79180005			1	
11	POWER HARROW BASE FRAME ASSEMBLY		78110008			1	
12	GASKET 195X155X1.5MM		10040086		7	9	11

PTO ASSEMBLY-SHEAR BOLT TYPE



PTO SHAFT					
Sr. No.	DESCRIPTION	PART CODE			
		540 RPM		1000 RPM	
		CUT	FULL	CUT	FULL
1	PUSH PIN YOKE	10310095			10310037
2	CROSS JOURNAL SET	10310097			
3	OUTER YOKE	10310004			
4	ROLL PIN FOR OUTER TUBE	10310005			
5	OUTER TUBE	10310092	10310092		10310092
6	INNER TUBE	10310091	10310091		10310091
7	ROLL PIN FOR INNER TUBE	10310008			
8	INNER YOKE	10310096			
9	COMPLETE SHEAR BOLT	10310010			
10	GUARD RETAINING COLLER FOR OUTER TUBE	10310011			
11	GUARD RETAINING COLLER FOR INNER TUBE	10310012			
12	SAFETY CHAIN	10310013			
13	COMPLETE GUARD ASSEMBLY	10310014	10310047		10310047
14	PUSH PIN SET	10310015			
15	SHEAR BOLT YOKE	10310094			
16	BALL	10310017			
17	SHEAR BOLT HUB	10310093			
18	SAFETY BOLT M10X1.5X65	10260054			
19	NUT M10X1.5	10280002			
20	GREASE FITTING	10310019			
21	U JOINT FOR OUTER TUBE	10310020			10310056
22	U JOINT FOR INNER TUBE	10310021			
23	HALF FEMALE GUARD ASSEMBLY	10310048	10310051		10310051
24	HALF MALE GUARD ASSEMBLY	10310049	10310050		10310050
25	HALF FEMALE SHAFT	10310024			
26	HALF MALE SHAFT	10310049			

DELIVERY CHECKLIST

Dealer Pre-Delivery (Please Tick)	Please Complete all Dealer information Below
<p>1. Dealer Pre-Delivery Checklist</p> <ol style="list-style-type: none"> 1. The customer or person responsible has been given the operator's manual. 2. The customer undertakes to read the complete operator's manual and understands all aspects of the manual before operation of the machine. 3. All safety, operational and maintenance information have been explained and demonstrated. 4. All greasing and oil points, stickers, guarding and ID plate have been identified and physically pointed out. 5. The customer agrees that it is his responsibility to read and carry out the safety, maintenance and operation as per this operator's manual. 	<p>Dealer Information</p> <p>Dealer's Name.....</p> <p>Address.....</p> <p>State..... Postcode.....</p> <p>Phone..... Fax.....</p> <p>Email.....</p> <p>Service Person.....</p> <p>I confirm that the pre-delivery service was performed on this machine.</p> <p>Signature.....</p> <p>Date.....</p> <p>Comments.....</p>
Customer Delivery (Please Tick)	Please Complete all Customer Information Below
<p>2. Customer Delivery Checklist</p> <ol style="list-style-type: none"> 1. The customer or person responsible has been given the operator's manual. 2. The customer undertakes to read the complete operator's manual and understands all aspects of the manual before operation of the machine. 3. All safety, operational and maintenance information have been explained and demonstrated. 4. All greasing and oil points, stickers, guarding and ID plate have been identified and physically pointed out. 5. The customer agrees that it is his responsibility to read and carry out the safety, maintenance and operation as per this operator's manual. 	<p>Customer Information</p> <p>Customer's Name.....</p> <p>Address.....</p> <p>State..... Postcode.....</p> <p>Phone..... Fax.....</p> <p>Email.....</p> <p>Delivery Person.....</p> <p>I confirm that all of the delivery checks were explained and performed.</p> <p>Signature.....</p> <p>Delivery Date.....</p> <p>Comments.....</p>

FIELDKING

WARRANTY CARD Customer Copy

CUSTOMER NAME Mr./ Mrs. :

ADDRESS :

MOBILE NO. :

Email :

NAME OF IMPLEMENT :

MODEL NO. :

YEAR OF Mfg. :

SERIAL NO. :

REGISTRATION NO. :

DATE OF PURCHASING :

NAME OF DEALER :

Customer's Signature

Dealer's Signature



Beri Udyog Pvt. Ltd.

Corporate Office : Plot No. 235-236 & 238-240, Sec-3, HSIIDC,
Karnal- 132001 (Haryana), India

+91-184-2221571/ 72/ 73
✉ marketing@fieldking.com, exports@fieldking.com, 🌐 www.fieldking.com

FIELDKING

WARRANTY CARD Company Copy

CUSTOMER NAME Mr./ Mrs :

ADDRESS :

MOBILE NO. :

Email :

NAME OF IMPLEMENT :

MODEL NO. :

YEAR OF Mfg. :

SERIAL NO. :

REGISTRATION NO. :

DATE OF PURCHASING :

NAME OF DEALER :

Customer's Signature

Dealer's Signature



Corporate Office : Plot No. 235-236 & 238-240, Sec-3, HSIIDC,
Karnal- 132001 (Haryana), India ☎ +91-184-2221571/ 72/ 73
✉ marketing@fieldking.com, exports@fieldking.com, 🌐 www.fieldking.com

FIELDKING

WARRANTY CARD

Dealer Copy

CUSTOMER NAME Mr./ Mrs :

ADDRESS :

MOBILE NO. :

Email :

NAME OF IMPLEMENT :

MODEL NO. :

YEAR OF Mfg. :

SERIAL NO. :

REGISTRATION NO. :

DATE OF PURCHASING :

NAME OF DEALER :

Customer's Signature

Dealer's Signature



Beri Udyog Pvt. Ltd.

Corporate Office : Plot No. 235-236 & 238-240, Sec-3, HSIIDC,
Karnal- 132001 (Haryana), India

☎ +91-184-2221571/ 72/ 73
✉ marketing@fieldking.com, exports@fieldking.com, 🌐 www.fieldking.com